

| ID-5100 | KT-8900 | UV-5R | Link | Name | Frequency | Duplex | Offset | Tx Tone | Rx Tone | Mode | Location | Club / Sponsor | Comment (last updated on Jan 17, 2020) |
|---------|---------|-------|------|--------|-----------|--------|--------|---------|---------|---------|---------------------------|--------------------|--|
| A0 | 0 | 0 | | Call | 146.5200 | | | | | FM | | | |
| A1 | 1 | 1 | | XbandR | 446.0250 | | | 100.0 | | FM | | | |
| A2 | 2 | 2 | | VE7RXZ | 147.2200 | + | 0.600 | 100.0 | 100.0 | FM | Nanaimo | Sun Coast ARCS | IRLP 1722 |
| A3 | 3 | 3 | | VE7SCK | 442.6500 | + | 5.000 | 100.0 | 100.0 | FM | Roberts Creek | Sun Coast ARCS | |
| A4 | 4 | 4 | F | VE7RNI | 146.9400 | - | 0.600 | | | FM | Shelly Mnt, Port McNeill | North Island ARS | ITS: ON/OFF: 94* / 95* |
| A5 | 5 | 5 | F | VE7RWV | 146.8800 | - | 0.600 | | | FM | Woss Lake | North Island ARS | ITS: ON/OFF: 88* / 89* |
| A6 | 6 | 6 | F | VE7RNC | 146.7000 | - | 0.600 | 141.3 | | FM | Newcastle Ridge, Sayward | North Island ARS | ITS: ON/OFF: 70* / 71* |
| A7 | 7 | 7 | F | VE7RNC | 443.7000 | + | 5.000 | 141.3 | 141.3 | FM | Sayward | North Island ARS | ITS |
| A8 | 8 | 8 | F | VE7RVR | 146.8200 | - | 0.600 | | | FM | Campbell River | CR Repeater Group | ITS: ON/OFF: 82* / 83* |
| A9 | 9 | 9 | F | VE7NIR | 443.7000 | + | 5.000 | 141.3 | 141.3 | FM | Courtenay | | ITS |
| A10 | 10 | 10 | F | VE7RPA | 147.1500 | + | 0.600 | 151.4 | | FM | Port Alberni | Arrowsmith ARC | ITS: ON/OFF: 15* / 16* |
| A11 | 11 | 11 | F | VE7TOF | 146.8800 | - | 0.600 | 141.3 | | FM | Tofino | Comox Valley ARC | ITS |
| A12 | 12 | 12 | F | VE7DJA | 145.4300 | - | 0.600 | 141.3 | 141.3 | FM | Lost Lake, Nanaimo | Nanaimo ARA | ITS: ON/OFF: 43* / 44* |
| A13 | 13 | 13 | F | VA7ITS | 444.7250 | + | 5.000 | 141.3 | 141.3 | FM | Nanaimo | Nanaimo ARA | ITS: ON/OFF: 472* / 473* IRLP: 1755, EchoL |
| A14 | 14 | 14 | F | VE7RNA | 146.6800 | - | 0.600 | 141.3 | | FM | Mt. Brenton, Chemainus | CVARS | ITS |
| A15 | 15 | 15 | F | VE7RNA | 442.6000 | + | 5.000 | 141.3 | 141.3 | FM | Mt. Brenton, Chemainus | CVARS | ITS |
| A16 | 16 | 16 | | VA7LND | 147.0000 | + | 0.600 | 100.0 | | FM | Lund | Powel River ARC | |
| A17 | 17 | 17 | | VA7LND | 444.3500 | + | 5.000 | 100.0 | | FM | Lund | Powel River ARC | |
| A18 | 18 | 18 | | VE7PRR | 147.2000 | + | 0.600 | 141.3 | | FM | Powel River | Powel River ARC | |
| A19 | 19 | 19 | | VE7PRR | 444.5000 | + | 5.000 | 141.3 | | FM | Powell River | Powel River ARC | |
| A20 | 20 | 20 | | VE7TIR | 444.0250 | + | 5.000 | 141.3 | | FM | Texada Island Pochantas | Powel River ARC | |
| A21 | 21 | 21 | E | VE7BNV | 146.7200 | - | 0.600 | 100.0 | 100.0 | FM | Bowen | | |
| A22 | 22 | 22 | E | VE7NSR | 443.2000 | + | 5.000 | | | FM | Vancouver | North Shore ARC | |
| A23 | 23 | 23 | | VE7RAP | 146.9100 | - | 0.600 | 141.3 | | FM | Courtenay | Comox Valley ARC | |
| A24 | 24 | 24 | | VE7RCV | 146.7800 | - | 0.600 | 141.3 | | FM | Comox | Comox Valley ARC | |
| A25 | 25 | 25 | | VE7NIR | 146.6200 | - | 0.600 | 141.3 | | FM | Mt Washington, Courtenay | | |
| A26 | 26 | 26 | S | VA7RPQ | 145.3700 | - | 0.600 | 100.0 | | FM | Parksville | Mid Island RA | |
| A27 | 27 | 27 | S | VE7RBB | 147.1800 | + | 0.600 | 100.0 | | FM | Mt Benson, Nanaimo | Mid Island RA | |
| A28 | 28 | 28 | | VE7SYD | 442.2750 | + | 5.000 | 136.5 | 136.5 | FM | Parksville | Mid Island RA | |
| A29 | 29 | 29 | | VE7MIR | 440.8500 | + | 5.000 | 100.0 | 100.0 | FM | Parksville | Mid Island RA | |
| A30 | 30 | 30 | | VE7PQA | 147.2800 | + | 0.600 | 141.3 | 141.3 | FM | Parksville | ORCA | IRLP: 1180 |
| A31 | 31 | 31 | | VA7LPG | 444.3000 | + | 5.000 | 141.3 | | FM | Nanose Bay | VE7IT | IRLP: 1130 |
| A32 | 32 | 32 | † | VE7KU | 147.2400 | + | 0.600 | 141.3 | 141.3 | FM | Port Alberni | Arrowsmith ARC | 4000', solar, IRLP: 1120 |
| A33 | 33 | 33 | † | VE7KU | 444.4500 | + | 5.000 | 141.3 | | FM | Salt Spring Island | Arrowsmith ARC | |
| A34 | 34 | 34 | | VE7RTU | 444.7500 | + | 5.000 | 100.0 | | FM | Port Alberni | | |
| A35 | 35 | 35 | | VE7ISC | 146.6400 | - | 0.600 | 141.3 | 141.3 | FM/C4FM | Nanaimo | NARA | IRLP: 1003 |
| A36 | 36 | 36 | | VE7DJA | 443.9000 | + | 5.000 | 141.3 | 141.3 | FM | Nanaimo | NARA | 600', 30W |
| A37 | 37 | 37 | | VA7ANI | 146.9800 | - | 0.600 | 141.3 | 141.3 | FM | Nanaimo | NARA | 500', 30W |
| A38 | 38 | 38 | ζ | VA7RFR | 147.0800 | + | 0.600 | 141.3 | 141.3 | FM | Parksville | VA7DMN | IRLP: 1179 |
| A39 | 39 | 39 | ζ | VA7VIU | 443.0000 | + | 5.000 | 141.3 | 141.3 | FM | Nanaimo | CECA | |
| A40 | 40 | 40 | ζ | VE7IPM | 442.5250 | + | 5.000 | 141.3 | 141.3 | FM | Nanaimo | VA7MPG | |
| A41 | 41 | 41 | ζ | VE7DNR | 442.4500 | + | 5.000 | 141.3 | 141.3 | FM | Ladysmith | VE7LSE | |
| A42 | 42 | 42 | | VE7GFD | 444.9000 | + | 5.000 | 141.3 | 141.3 | FM | Gabriola Island Fire Hall | | |
| A43 | 43 | 43 | | VE7DXH | 145.4100 | - | 0.600 | 88.5 | | FM | Ladysmith | | |
| A44 | 44 | 44 | | VE7RVC | 145.4700 | - | 0.600 | 127.3 | | FM | Mt Sicker, Duncan | CVARS | |
| | | | | VE7AQW | 52.8700 | - | 1.700 | 141.3 | | FM | Duncan | CVARS | |
| A45 | 45 | 45 | | VE7RSI | 147.3200 | + | 0.600 | 88.5 | 88.5 | FM | Salt Spring Island | Salt Spring Is ARC | Solar, Packet (without tone) |
| A46 | 46 | 46 | | VE7RPG | 444.4500 | + | 5.000 | 103.5 | 103.5 | FM | Salt Spring Island | Salt Spring Is ARC | |
| A47 | 47 | 47 | | VE7EMG | 444.3750 | + | 5.000 | 88.5 | 88.5 | FM | Salt Spring Island | Salt Spring Is ARC | |
| A48 | 48 | 48 | π | VA7VIC | 146.6600 | - | 0.600 | 100.0 | | FM | Salt Spring Island | WARA | |
| A49 | 49 | 49 | π | VE7VIC | 146.8400 | - | 0.600 | 100.0 | 100.0 | FM | Mt. McDonald | WARA | IRLP: 1030 |
| A50 | 50 | 50 | π | VE7USA | 444.8750 | + | 5.000 | 107.2 | 107.2 | FM | Mt. McDonald | WARA | |
| A51 | 51 | 51 | π | VE7RMT | 146.8400 | - | 0.600 | 131.8 | | FM | Tri Mountain | WARA | |
| A52 | 52 | 52 | | VE7RTC | 443.9500 | + | 5.000 | 123.0 | | FM | Mt. McDonald | WARA | Linked to 6m |
| A53 | 53 | 53 | | VE7RFI | 146.9800 | - | 0.600 | 103.5 | 103.5 | FM | Mt. McDonald | Cable Workers ARS | CRERCC |
| A54 | 54 | 54 | | VE7RYF | 444.9250 | + | 5.000 | 100.0 | | FM | Survey Mountain | CRDEP | CRERCC |
| A55 | 55 | 55 | | VE7US | 145.1300 | - | 0.600 | 114.8 | | FM | Highlands | | CRERCC |
| A56 | 56 | 56 | | VE7SER | 145.2900 | - | 0.600 | 167.9 | 167.9 | FM | Mt. Douglas | Saanich EP | |
| A57 | 57 | 57 | | VE7RFR | 147.2400 | + | 0.600 | | | FM | Victoria | VE7DAT | |
| C01 | 58 | 58 | | VE7RPT | 146.9400 | - | 0.600 | | | FM | Vancouver | | IRLP: 1694 |
| C02 | 59 | 59 | | VE7RHS | 145.2700 | + | 0.600 | 100.0 | | FM | Vancouver | | IRLP: 1010 |
| C03 | 60 | 60 | | VA7IP | 145.2900 | - | 0.600 | 100.0 | | FM | Vancouver | | |
| C04 | 61 | 61 | | VE7RNV | 147.2600 | + | 0.600 | | | FM | Vancouver | | |
| C05 | 62 | 62 | | VE7RDX | 147.3000 | + | 0.600 | | | FM | Vancouver | | |
| C06 | 63 | 63 | | VE7RCH | 147.0400 | + | 0.600 | | | FM | Burnaby SFU | | |
| C07 | 64 | 64 | | VE7TEL | 145.1700 | - | 0.600 | | | FM | Burnaby | | |
| C08 | 65 | 65 | | VE7FVR | 147.0600 | + | 0.600 | | | FM | Burnaby | | |
| C09 | 66 | 66 | | VE7RBY | 145.3500 | - | 0.600 | 88.5 | | NFM | Burnaby | | |
| C10 | 67 | 67 | | VE7RMD | 147.1400 | + | 0.600 | 79.7 | | FM | Richmond | | |
| C11 | 68 | 68 | | VE7RSC | 147.3600 | + | 0.600 | 110.9 | | FM | Surrey | | IRLP: 1736 |
| C12 | 69 | 69 | | VE7RLY | 147.3800 | + | 0.600 | 110.9 | | FM | Langley | | |
| C13 | 70 | 70 | | VE7SUN | 147.3400 | + | 0.600 | 107.2 | | FM | Delta | | |
| C14 | 71 | 71 | | VE7RMR | 146.8000 | - | 0.600 | 156.7 | | FM | Maple Ridge | | IRLP: 1910 |
| C15 | 72 | 72 | | VE7RVA | 146.6100 | - | 0.600 | 110.9 | | FM | Abbotsford | | IRLP: 1461 |
| B01 | 80 | 80 | | APRS | 144.3900 | | | | | FM | | | APRS |
| B02 | 81 | 81 | | WINLNK | 145.0300 | | | | | FM | | | Winlink |
| B03 | 82 | 82 | | VE7GN | 144.9700 | | | | | FM | | | Winlink |
| B04 | 83 | 83 | | VE7DYK | 145.7900 | | | | | FM | | | Winlink |
| B05 | 84 | 84 | | VE7DYK | 440.1250 | | | | | FM | | | Winlink |
| B06 | 85 | 85 | | VA7EOC | 441.0250 | | | | | FM | | | Winlink |
| B07 | 86 | 86 | | VA7EOC | 443.4250 | | | | | FM | | | Winlink |
| B08 | 87 | 87 | | VE7TEL | 145.0900 | | | | | FM | | | Winlink |
| B09 | 88 | 88 | | VE7TEL | 443.4350 | | | | | FM | | | Winlink |
| B10 | 89 | 89 | | VE7LAN | 145.0700 | | | | | FM | | | Winlink |
| B11 | 90 | 90 | | VE7DEP | 144.4300 | | | | | FM | | | Winlink |

Simplex:
• 146.415 – 146.595 Δ = 15 kHz
• 446.000 – 446.175 Δ = 25 kHz

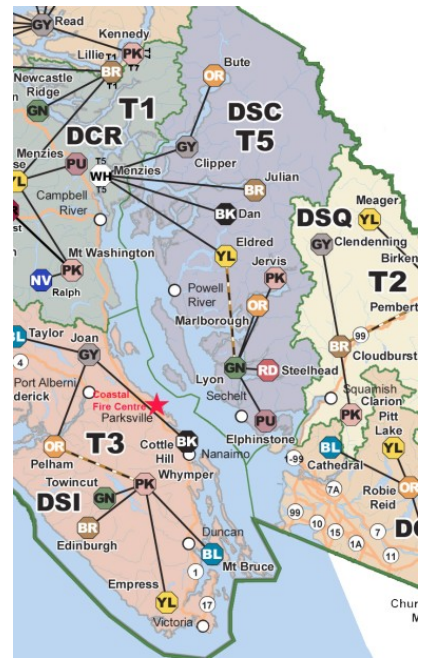
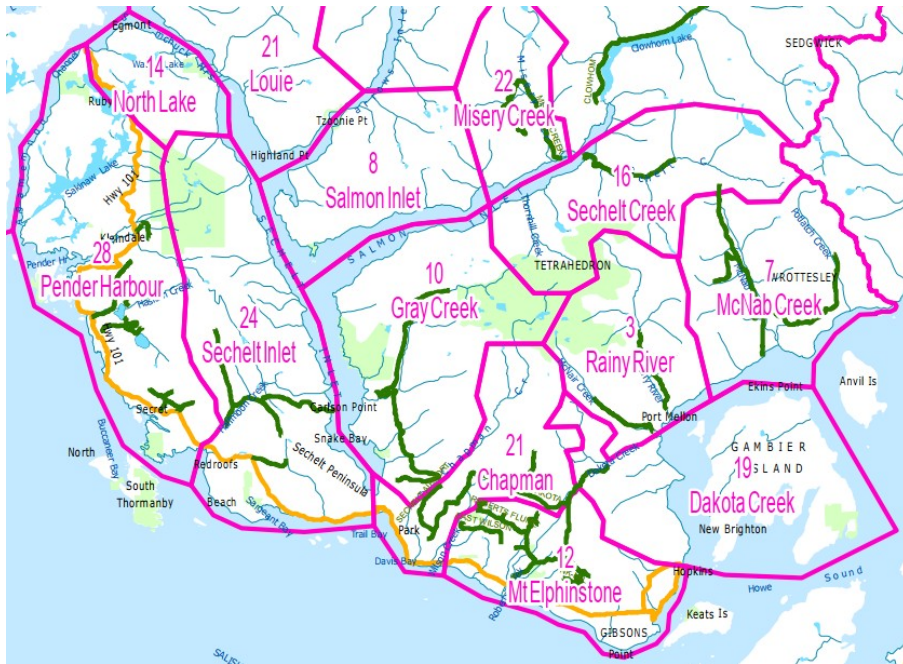
| ID-51100 | KT-8900 | UV-5R | Link | Name | Frequency | Duplex | Offset | Tx Tone | Rx Tone | Mode | Location | Club / Sponsor | Comment (last updated on Jan 17, 2020) |
|----------|---------|-------|------|---------|-----------|--------|--------|---------|---------|------|-------------|----------------|--|
| Z01 | 91 | 91 | | FRS 1 | 462.5625 | | | | | FM | | | |
| Z02 | 92 | 92 | | FRS 2 | 462.5875 | | | | | FM | | | |
| Z03 | 93 | 93 | | FRS 3 | 462.6125 | | | | | FM | | | |
| Z04 | 94 | 94 | | FRS 4 | 462.6375 | | | | | FM | | | |
| Z05 | 95 | 95 | | FRS 5 | 462.6625 | | | | | FM | | | |
| Z06 | 96 | 96 | | FRS 6 | 462.6875 | | | | | FM | | | |
| Z07 | 97 | 97 | | FRS 7 | 462.7125 | | | | | FM | | | |
| Z08 | 98 | 98 | | FRS 8 | 467.5625 | | | | | FM | | | |
| Z09 | 99 | 99 | | FRS 9 | 467.5875 | | | | | FM | | | |
| Z10 | 100 | 100 | | FRS 10 | 467.6125 | | | | | FM | | | |
| Z11 | 101 | 101 | | FRS 11 | 467.6375 | | | | | FM | | | |
| Z12 | 102 | 102 | | FRS 12 | 467.6625 | | | | | FM | | | |
| Z13 | 103 | 103 | | FRS 13 | 467.6875 | | | | | FM | | | |
| Z14 | 104 | 104 | | FRS 14 | 467.7125 | | | | | FM | | | |
| Z15 | 105 | 105 | | FRS 15 | 462.5500 | | | | | FM | | | |
| Z16 | 106 | 106 | | FRS 16 | 462.5750 | | | | | FM | | | |
| Z17 | 107 | 107 | | FRS 17 | 462.6000 | | | | | FM | | | |
| Z18 | 108 | 108 | | FRS 18 | 462.6250 | | | | | FM | | | |
| Z19 | 109 | 109 | | FRS 19 | 462.6500 | | | | | FM | | | |
| Z20 | 110 | 110 | | FRS 20 | 462.6750 | | | | | FM | | | |
| Z21 | 111 | 111 | | FRS 21 | 462.7000 | | | | | FM | | | |
| Z22 | 112 | 112 | | FRS 22 | 462.7250 | | | | | FM | | | |
| Y01 | 113 | 113 | | FI Ops | 155.9100 | | | | | FM | BC Ferries | | Boat Portables |
| Y02 | 114 | 114 | | Load 1 | 458.1125 | | | | | FM | BC Ferries | | Loading All |
| Y03 | 115 | 115 | | Load 2 | 458.6375 | | | | | FM | BC Ferries | | Loading All |
| Y04 | 116 | 116 | | Hs Bay | 460.1750 | + | 5.000 | 97.4 | | NFM | BC Ferries | | Horseshoe Bay Ops |
| Y05 | 117 | 117 | | Hs/Dept | 469.7125 | | | 100.0 | | NFM | BC Ferries | | Departure Bay / Horseshoe Bay Traffic |
| Y06 | 118 | 118 | | Tsawwas | 463.7625 | + | 5.000 | 97.4 | | NFM | BC Ferries | | Tsawwassen Ops |
| Y07 | 119 | 119 | | Duke Pt | 453.0625 | | | | | NFM | BC Ferries | | Duke Point Ops |
| Y11 | 120 | 120 | | CH 4A | 156.2000 | + | 4.600 | 97.4 | | FM | Marine Freq | | Coast Guards Authorized Stations |
| Y12 | 121 | 121 | | CH 11 | 156.5500 | | | | | FM | Marine Freq | | Vic Traffic |
| Y13 | 122 | 122 | | CH 12 | 156.6000 | | | | | FM | Marine Freq | | Van Traffic |
| Y14 | 123 | 123 | | CH 14 | 156.7000 | | | | | FM | Marine Freq | | Ship-to-Ship |
| Y15 | 124 | 124 | | CH 16 | 156.8000 | | | | | FM | Marine Freq | | Call Freq |
| Y16 | 125 | 125 | | Ch 22A | 157.1000 | | | | | FM | Marine Freq | | Coast Guards Working |
| Y17 | 126 | 126 | | Ch 61A | 156.0750 | | | | | FM | Marine Freq | | Coast Guards |
| Y18 | 127 | 127 | | Ch 62A | 156.1250 | | | | | FM | Marine Freq | | Coast Guards |

Vessel-Vessel / Vessel-Tower:
 * FI Ops

Langdale
 * Load 2

Horseshoe Bay:
 * Hs Bay
 * Load 2

Departure Bay:
 * Load 2
 * Hs/Dept



| ID-5100 | KT-8900 | UV-5R | Link | Name | Frequency | Duplex | Offset | Tx Tone | Rx Tone | Mode | Location | Club / Sponsor | Comment (last updated on Jan 17, 2020) |
|---------|---------|-------|------|----------|-----------|--------|--------|---------|---------|------|----------|----------------|--|
| T01 | 129 | | | RR-01 | 150.0800 | | | | | NFM | | | |
| T02 | 130 | | | RR-02 | 150.1100 | | | | | NFM | | | |
| T03 | 131 | | | RR-03 | 150.1400 | | | | | NFM | | | |
| T04 | 132 | | | RR-04 | 150.1850 | | | | | NFM | | | |
| T05 | 133 | | | RR-05 | 150.2000 | | | | | NFM | | | |
| T06 | 134 | | | RR-06 | 150.2450 | | | | | NFM | | | |
| T07 | 135 | | | RR-07 | 150.2600 | | | | | NFM | | | |
| T08 | 136 | | | RR-08 | 150.3200 | | | | | NFM | | | |
| T09 | 137 | | | RR-09 | 150.3650 | | | | | NFM | | | |
| T10 | 138 | | | RR-10 | 150.4100 | | | | | NFM | | | |
| T11 | 139 | | | RR-11 | 150.4400 | | | | | NFM | | | |
| T12 | 140 | | | RR-12 | 150.5000 | | | | | NFM | | | |
| T13 | 141 | | | RR-13 | 150.5300 | | | | | NFM | | | |
| T14 | 142 | | | RR-14 | 150.5450 | | | | | NFM | | | |
| T15 | 143 | | | RR-15 | 150.5600 | | | | | NFM | | | |
| T16 | 144 | | | RR-16 | 150.5900 | | | | | NFM | | | |
| T17 | 145 | | | RR-17 | 150.6800 | | | | | NFM | | | |
| T18 | 146 | | | RR-18 | 150.7100 | | | | | NFM | | | |
| T19 | 147 | | | RR-19 | 150.7700 | | | | | NFM | | | |
| T20 | 148 | | | RR-20 | 150.8300 | | | | | NFM | | | |
| T21 | 149 | | | RR-21 | 151.0100 | | | | | NFM | | | |
| T22 | 150 | | | RR-22 | 151.1300 | | | | | NFM | | | |
| T23 | 151 | | | RR-23 | 151.1900 | | | | | NFM | | | |
| T24 | 152 | | | RR-24 | 151.2200 | | | | | NFM | | | |
| T25 | 153 | | | RR-25 | 151.3100 | | | | | NFM | | | |
| T26 | 154 | | | RR-26 | 151.3400 | | | | | NFM | | | |
| T27 | 155 | | | RR-27 | 151.3700 | | | | | NFM | | | |
| T28 | 156 | | | RR-28 | 151.4300 | | | | | NFM | | | |
| T29 | 157 | | | RR-29 | 151.4600 | | | | | NFM | | | |
| T30 | 158 | | | RR-30 | 151.4900 | | | | | NFM | | | |
| T31 | 159 | | | RR-31 | 151.5200 | | | | | NFM | | | |
| T32 | 160 | | | RR-32 | 151.5800 | | | | | NFM | | | |
| T33 | 161 | | | RR-33 | 151.6100 | | | | | NFM | | | |
| T34 | 162 | | | RR-34 | 151.6400 | | | | | NFM | | | |
| T35 | 163 | | | RR-35 | 151.6700 | | | | | NFM | | | |
| T36 | 164 | | | LAAD 1 | 154.1000 | | | | | NFM | | | |
| T37 | 165 | | | LAAD 2 | 158.9400 | | | | | NFM | | | |
| T38 | 166 | | | LAAD 3 | 154.3250 | | | | | NFM | | | |
| T39 | 167 | | | LAAD 4 | 173.3700 | | | | | NFM | | | |
| U01 | 168 | | | Gold | 163.8300 | | | | | NFM | | | |
| U02 | 169 | | | Silver | 163.8900 | | | | | NFM | | | |
| U03 | 170 | | | Copper | 164.9100 | | | | | NFM | | | |
| U04 | 171 | | | Nickel | 159.2700 | | | | | NFM | | | |
| U05 | 172 | | | Bronze | 163.9800 | | | | | NFM | | | |
| U06 | 173 | | | Red | 163.9350 | - | 0.870 | 151.4 | | NFM | | | RD |
| U07 | 174 | | | Purple | 163.9650 | - | 0.870 | 151.4 | | NFM | | | PU |
| U08 | 175 | | | Green | 163.9950 | - | 0.870 | 151.4 | | NFM | | | GN |
| U09 | 176 | | | Black | 164.2650 | - | 0.870 | 131.8 | | NFM | | | BK |
| U10 | 177 | | | FIRE A1 | 167.6700 | - | 4.740 | | | | | | Forest Fire Dispatch |
| U11 | 178 | | | FIRE A2 | 166.7100 | - | 4.020 | 114.8 | | | | | Forest Fire Dispatch |
| U12 | 179 | | | FIRE A3 | 168.8850 | - | 4.980 | | | | | | Forest Fire Dispatch |
| S00 | 180 | | | Fire | 149.2900 | | | | | | | | Sunshine Coast Fire Depts |
| S01 | 181 | | | Fire | 153.8600 | | | | | | | | Roberts Creek Fire Dept |
| S02 | 182 | | | Fire | 154.0700 | | | | | | | | Pender, Roberts Creek Fire Dept |
| S03 | 183 | | | Fire | 155.5650 | | | | | | | | Sechelt Fire Dept |
| S04 | 184 | | | Fire | 154.9800 | | | | | | | | Halfmoon Bay, Egmont Fire Dept |
| S05 | 185 | | | Fire | 154.7100 | | | | | | | | Pender Fire Dept |
| S06 | 186 | | | Fire | 153.3350 | | | | | | | | Portables? |
| S07 | 187 | | | Fire | 155.4600 | - | 5.110 | | | | | | Firecom1 / Interop / EMBC |
| S08 | 188 | | | Ambulanc | 142.1550 | - | 3.990 | 123.0 | | | | | Ambulance Mnt Benson Repeater 2 |
| S09 | 189 | | | Hospital | 469.0750 | | | | | | | | Hospital |
| S10 | 190 | | | SAR1 | 149.4950 | | | | | | | | PEPSAR-1 |
| | 191 | | | S. Rpt | 164.5950 | | | | 203.5 | FM | | | South Repeater / Gibsons Simplex |
| | 192 | | | N. Rpt | 166.0050 | | | | 196.6 | FM | | | North Repeater / Pender Simplex |
| | 193 | | | Sechelt | 170.9850 | | | | 156.7 | FM | | | Sechelt Simplex |
| V00 | 194 | | | PublicW | 143.0000 | | | | | | | | Public Works |
| V01 | 195 | | | HW1 | 143.4450 | + | 5.350 | | | | | | Public Works Tones are either 77.0, 114.8, 131.8, or 151.4 |
| V02 | 196 | | | HW2 | 143.2950 | + | 4.990 | | | | | | Public Works Tones are either 77.0, 114.8, 131.8, or 151.4 |
| V03 | 197 | | | HW3 | 143.4150 | + | 5.170 | | | | | | Public Works Tones are either 77.0, 114.8, 131.8, or 151.4 |
| V04 | 198 | | | HW4 | 143.8950 | + | 4.960 | | | | | | Public Works Tones are either 77.0, 114.8, 131.8, or 151.4 |