



Sun Coast Amateur Radio Society



Sunshine Coast Emergency Communications

Information



February 7, 2019



EMERGENCY COMMUNICATIONS



Emergency Radio Communications

Many amateur radio operators have the equipment and skills to support the community in case of an emergency and may be able to make an essential contribution to public safety. The hazards we face here on the Sunshine Coast are apparent to all - club members are strongly encouraged to have a source of back-up radio power and emergency supplies for a period of 72 hours, better still - two weeks. It is recommended to maintain a paper copy of this section and of all BCARCC repeater frequencies within range if not programmed in your radio.

The Sunshine Coast Regional District Emergency Operations Centre is located at 1975 Field Road, Wilson Creek (up by the airport) and is equipped with a dedicated Emergency Communications Radio station callsign VE7SCE. It is equipped with amateur VHF/UHF/HF Voice and Packet/Pactor data communications using the Winlink system. In addition, it has have MSAT satellite telephone fixed and mobile units; a mobile satellite internet dish providing Wi-Fi to the EOC; Inter-Municipal Emergency Radio system (IMERC-2C); Vancouver Health Emergency Network; Aero/Marine band radios and the SCRDC Trunk Network radio on various channels covering the coast from a repeater on Mount Benson on Vancouver Island. The Sunshine Coast fire departments have an Emergency Fire Dispatch radio/paging system enabling control of all Fire Stations from the EOC. An Emergency generator will provide electrical power to the EOC. Portable generators are also available.

Initial Actions in the Event of an Emergency

In the event of a significant emergency affecting communications across the Coast - all amateur radio operators should, if it is safe to do so:

- 1. Monitor the VE7RXZ repeater on VHF 147.220 MHz with a tone of 100.0 for traffic or requests for assistance from VE7SCE,**
- 2. If able, also monitor simplex VHF 146.490 MHz and/or 146.565 MHz for traffic or request for assistance from VE7SCE,**
- 3. If able, monitor EMBC HF frequencies for information. It is unlikely that VE7SCE will use HF for local communications on the Sunshine Coast, however relays may be required for another station on frequency.**

Declaration of State of Emergency by the SCRD EOC

The following will be broadcast from VE7SCE on
VE7RXZ 147.220 and/or via Simplex frequencies

ALL STATIONS ALL STATIONS ALL STATIONS

This is VE7SCE – Sunshine Coast Regional District Emergency Operations Centre, Sechelt, British Columbia* a – **LOCAL / REGIONAL / PROVINCIAL** (as declared) State of Emergency has been declared, I say again, a LOCAL/REGIONAL/PROVINCIAL State of Emergency has been declared. This frequency is now in use by VE7SCE and all stations not having emergency traffic are requested to remain clear – if you have traffic concerning safety of life or property in the Sunshine Coast Regional District – and you are unable to contact 911 – relay your traffic to this station – otherwise, if it is safe to do so – all station operators within the SCRD region are requested to remain monitoring this frequency as your assistance may be requested. This is VE7SCE – SCRD EOC Net control monitoring...

ALL STATIONS ALL STATIONS ALL STATIONS

This is VE7SCE – Sunshine Coast Regional District Emergency Operations Centre, Sechelt, British Columbia*. Stations within the SCRD region are requested to check in now with your callsign, name and location.

Once checked in you must inform SCRD Net Control if you intend to leave the frequency - this is VE7SCE standing by...

(As we share a frequency with stations in the Washington State islands – the full SCRD name and location will be used initially to avoid any confusion should our traffic be heard south of the border.)*

HF Emergency Frequencies

EMBC- 80m Primary Night	3.735	LSB	Phone
EMBC- 80m Secondary Night	3.745	LSB	Phone
EMBC- 40m Primary Day	7.060	LSB	Phone
EMBC- 40m Secondary Day	7.070	LSB	Phone
EMBC- DATA	3.613.50	USB	DATA
EMBC- DATA	7.089.50	USB	DATA
VE7-SWF South West EMBC PREOC	14.135	USB	Phone
VE7-SWF South West EMBC PREOC	21.120	USB	Phone
VE7-KAZ Kamloops EMBC PREOC RMS*	5.371.50	USB	DATA
VE7RBH – Smithers, BC Winlink RMS*	3.6235 / 7063.0	USB	DATA
WASHST 01 – Washington State	3.985	LSB	Phone
WASHST 02– Washington State	3.994	LSB	Phone
WASHST 03– Washington State	7.245	LSB	Phone
BC PUBSVC – BC Public Service Net	3.729	LSB	Phone
ALASKA Emergency Net	14.292	USB	Phone
EMCOM A	3.675	LSB	Phone
EMCOM B	7.135	LSB	Phone
EMCOM C	14.135	USB	Phone
EMCOM D	18.135	USB	Phone
EMCOM E	21.235	USB	Phone
EMCOM F	28.235	USB	Phone
OREGON	3.980	LSB	Phone
EMBC 80 WASHST 01 EMCOM OREGON	Emergency Management BC Frequencies Washington State Emergency Frequencies IARU/RAC Canadian Emergency Freq. Oregon State Emergency Net Frequency		
EMBC - All Emergency Management Provincial Emergency Operations Controls may use these frequencies.			
* Winlink RMS Station			

National HF Emergency Communications Frequencies

The following frequencies and modes have been pre-determined for suggested use of the Amateur Radio Emergency Service during a declared emergency, or a disaster declared or otherwise, occurring anywhere in Canada. These frequencies have been registered with the International Amateur Radio Union (IARU) for its listings of Canadian national emergency frequencies in [IARU Region 2](#).

These are suggested frequencies and should not be construed as meaning that other HF frequencies may not be considered for Emcomm operations.

No Amateur Radio operator or group has exclusive ownership of any particular frequency on any band and, while common sense and courtesy logically would dictate that other Radio Amateurs should keep clear of frequencies being used for emergency or disaster operations, the affected ARES Net Control Station (NCS) must be prepared to move up or down from the pre-determined frequency, as required, in order to conduct operations. Entering into an on-air argument must be avoided.

BAND	SINGLE SIDEBAND		CW		DIGITAL	
	FREQUENCY	TACTICAL	FREQUENCY	TACTICAL	FREQUENCY	TACTICAL
80 M	3.675 MHz LSB	Alfa	3.535 MHz	Golf	3.596 MHz	Mike
40 M	7.135 MHz LSB	Bravo	7.035 MHz	Hotel	7.096 MHz	November
20 M	14.135 MHz USB	Charlie	14.035 MHz	India	14.096 MHz	Oscar
17 M	18.135 MHz USB	Delta	18.075 MHz	Juliet	18.096 MHz	Papa
15 M	21.235 MHz USB	Echo	21.035 MHz	Kilo	21.096 MHz	Quebec
10 M	28.235 MHz USB	Foxtrot	28.035 MHz	Lima	28.096 MHz	Romeo

USEFUL LINKS

Regular Emergency Nets

VE7PEP – Provincial Emergency HQ Victoria, VIR Region – Wednesday 19:15 hrs on the Island Trunk System: Nanaimo 145.430 Tone 141.3 & 444.725 Tone 141.3 / Chemainus 146.680 Tone 141.3 & 442.600 tone 141.3

<http://www.islandtrunksystem.org/cms/node/1>

HF

BC Public Service Net: Daily 3.729 17:30 hrs LT (winter) 18:30 hrs (summer)

<http://www.bcpsn.com/index.htm>

PC Provincial Emergency Net: Wednesday's 19:00 hrs Local Time on 3.735

http://www.percs.bc.ca/?page_id=242

BC and Yukon NTS Net: Daily 3.716 18:30 hrs LT (winter) 19:30 hrs LT (summer)

<http://separ.comm.sfu.ca/doc/NTS%20Handbook%20-%20BC%20Traffic%20Net.pdf>

Canadian Red Cross Net – Ottawa Station: Sundays 14.125 1900UTC

<https://wp.rac.ca/other-canadian-nets/>

Alaska Emergency Net: Daily 14.292 17:30 UTC (winter) (18:30 UTC summer)

<http://alaskapacificnet.org/>

Links:

Repeater Frequencies <https://bcarcc.org/vanisland.pdf>

<https://bcarcc.org/vancouver.pdf>

RAC National Emergency Frequencies

<https://wp.rac.ca/national-hf-emergency-communications-frequencies/>

SATERN -Salvation Army Emergency

<http://www.satern.org/>

Winlink

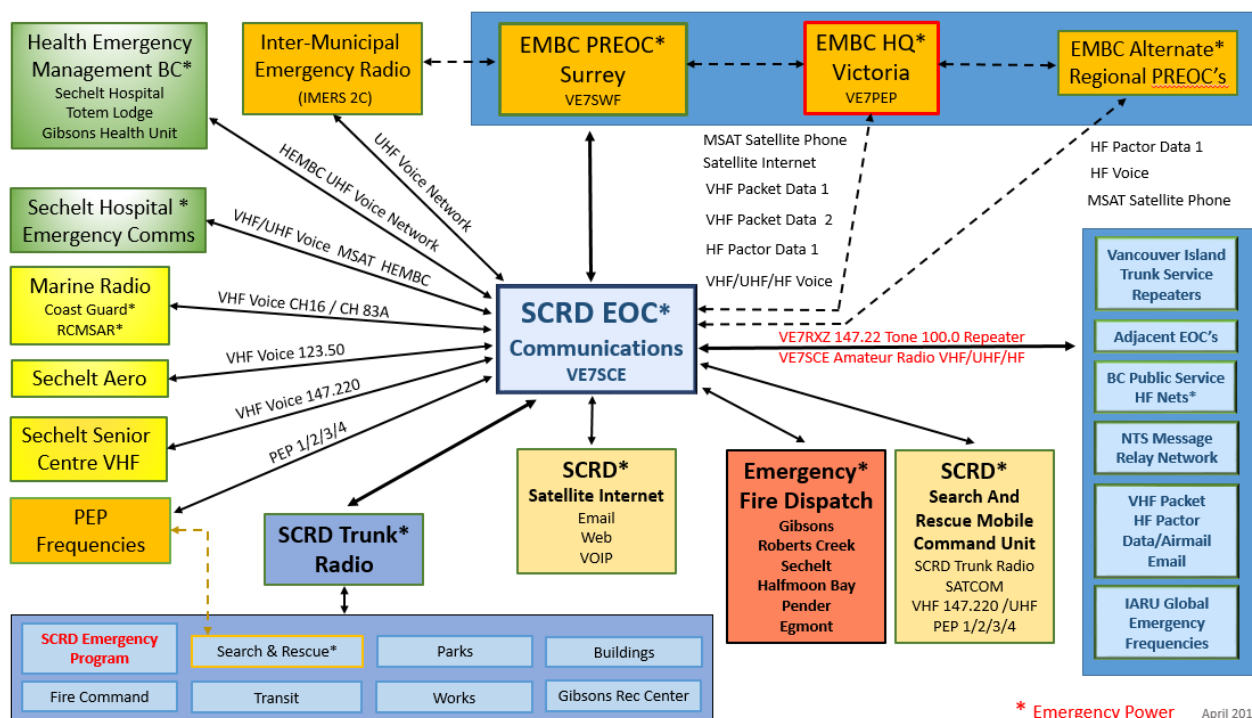
<https://www.winlink.org/>

Sunshine Coast Emergency Program – Emergency Radio

<http://www.scrd.ca/Emergency-Radio>

Winlink Address:

SCRD EOC Radio Room Winlink email address: ve7sce@winlink.org



SCR D Emergency Radio Station VE7SCE, SCR D HQ Offices, 1975 Field Road

Data/Comms Position 1	1 x Kenwood TM-D710GA VHF/UHF
Data/Comms Position 2	1 x Kenwood TM-D710GA VHF/UHF
Comms/Pactor Position 1	1 x Kenwood TS480HX 200W HF
	SCS DR7400 Pactor
	LDG 200 PRO II Auto Antenna Tuner
	1 x Kenwood TM-D710GA VHF/UHF
Comms/Data Position 2	1 x Kenwood TM-D710GA VHF/UHF
SCR D Trunk Radio	Installed on Buses/SCR D Service & Parks Vehicles.
	Repeater on Mt. Benson/VE7RXZ as SCA 147.220 is programmed into all SCR D Trunk radio, SCEP is the dedicated Emergency Program channel.



RADIOGRAM



NUMBER	PRECEDENCE	HX	STATION OF ORIGIN	CHECK	PLACE OF ORIGIN	TIME FILED (L)	DATE (L)
	<input type="checkbox"/> EMERGENCY <input type="checkbox"/> Priority <input type="checkbox"/> Routine <input type="checkbox"/> Welfare Operations Section to Complete						

To: _____ **Name** **Originator/Recipient**
 _____ **Position** **Communication Unit**
 _____ **Organization** **Documentation Unit**

Contact Number: () - _____

	1	2	3	4	5
1	_____	_____	_____	_____	_____
2	_____	_____	_____	_____	_____
3	_____	_____	_____	_____	_____
4	_____	_____	_____	_____	_____
5	_____	_____	_____	_____	_____

↑ Enter only ONE word per box ↑

Originator: _____ **Name**
 _____ **Position**
 _____ **Organization**

Contact Number: () - _____

Initials

Operations Section Approval to Transmit

GREYED AREAS
To be Completed by Radio Operator

Received	Received From	Time (Local)	Date (Local)
	Operator	Freq (MHz)	Method
Sent	Sent To	Time (Local)	Date (Local)
	Operator	Freq (MHz)	Method

Emergency Preparedness

<https://www.getprepared.gc.ca/cnt/rsracs/pblctns/yprprdnssgd/index-en.aspx>



PreparedBC

BASIC EMERGENCY SUPPLY KIT

gov.bc.ca/PreparedBC



First Aid kit and medications



Cell phone with chargers, inverter or solar charger



Garbage bags, moist towelettes and plastic ties for personal sanitation



Battery-powered or hand crank radio



Copy of your emergency plan, copies of important documents and cash in small bills



Water, four litres per person per day, for three days to one week, for drinking and sanitation



Battery-powered or hand crank flashlight with extra batteries



A three-day to one-week supply of non-perishable food and manual can opener



Dust mask to help filter contaminated air



Whistle to signal for help



Seasonal clothing and footwear