

ID-5100	KT-8900	DV-5R	Link	Name	Frequency	Duplex	Offset	Tx Tone	Rx Tone	Mode	Location	Club / Sponsor	Comment (last updated on May 7, 2024)
A0	0	0		XbandR	446.0250			100.0		FM	Simplex		
A1	1	1		RXZ-Smplx	147.2200			100.0		FM	Simplex		
A2	2	2		VE7RXZ	147.2200	+	0.600	100.0	100.0	FM	Nanaimo	Sun Coast ARCS	IRLP 1722
A3	3	3		VE7SCK	442.6500	+	5.000	100.0	100.0	FM	Roberts Creek	Sun Coast ARCS	
A4	4	4		VE7QNX	443.3750	+	5.000	100.0	100.0	FM	Gibsons	VE7RBE	IRLP 1337
A5	5	5	F	VE7RNI	146.9400	-	0.600			FM	Shelly Mnt, Port McNeill	North Island ARS	ITS: ON/OFF: 94° / 95°
A6	6	6	F	VE7RWW	146.8800	-	0.600			FM	Woss Lake	North Island ARS	ITS: ON/OFF: 88° / 89°
A7	7	7	F	VE7RNC	146.7000	-	0.600	141.3		FM	Newcastle Ridge, Sayward	North Island ARS	ITS: ON/OFF: 70° / 71°
A8	8	8	F	VE7RNC	443.7000	+	5.000	141.3	141.3	FM	Sayward	North Island ARS	ITS
A9	9	9	F	VE7RVR	146.8200	-	0.600			FM	Campbell River	CR Repeater Group	ITS: ON/OFF: 82° / 83°
A10	10	10	F	VE7NIR	443.7000	+	5.000	141.3	141.3	FM	Courtenay		ITS
A11	11	11	F	VE7RPA	147.1500	+	0.600	141.3		FM	Port Alberni	Arrowsmith ARC	ITS: ON/OFF: 15° / 16°
A12	12	12	F	VE7TOF	146.8800	-	0.600	141.3		FM	Tofino	Comox Valley ARC	ITS
A13	13	13	F	VE7DJA	145.4300	-	0.600	141.3	141.3	FM	Lost Lake, Nanaimo	Nanaimo ARA	ITS: ON/OFF: 43° / 44°
A14	14	14	F	VA7ITS	444.7250	+	5.000	141.3	141.3	FM	Mount Benson	Nanaimo ARA	ITS: ON/OFF: 472° / 473° IRLP: 1755, EchoL
A15	15	15	F	VE7AQW	146.6800	-	0.600	141.3	141.3	FM	Mt. Brenton, Chemainus	CVARS	ITS
A16	16	16	F	VE7AQW	442.6000	+	5.000	141.3	141.3	FM	Mt. Brenton, Chemainus	CVARS	ITS
A17	17	17		VA7LND	147.0000	+	0.600	100.0		FM	Lund	Powel River ARC	
A18	18	18		VA7LND	444.3500	+	5.000	100.0		FM	Lund	Powel River ARC	
A19	19	19		VE7PRR	147.2000	+	0.600	141.3		FM	Powel River	Powel River ARC	
A20	20	20		VE7PRR	444.5000	+	5.000	141.3		FM	Powell River	Powel River ARC	
A21	21	21		VE7TIR	444.0250	+	5.000	141.3		FM	Texada Island Pochantas Mt	Powel River ARC	
A22	22	22	E	VE7BNV	146.7200	-	0.600	100.0	100.0	FM	Bowen		
A23	23	23	E	VE7NSR	443.2000	+	5.000			FM	Vancouver	North Shore ARC	
A24	24	24		VE7RAP	146.9100	-	0.600	141.3		FM	Courtenay	Comox Valley ARC	
A25	25	25		VE7RCV	146.7800	-	0.600	141.3		FM	Comox	Comox Valley ARC	
A26	26	26		VE7NIR	146.6200	-	0.600	141.3		FM	Mt Washington, Courtenay		
A27	27	27	S	VA7RPQ	145.3700	-	0.600	100.0		FM	Parksville	Mid Island RA	
A28	28	28	S	VE7RBB	147.1800	+	0.600	100.0		FM	Mt Cokely, Nanaimo	Mid Island RA	
A29	29	29		VE7SYD	442.2750	+	5.000	136.5	136.5	FM	Parksville	Mid Island RA	
A30	30	30		VE7MIR	440.8500	+	5.000	100.0	100.0	FM	Parksville	Mid Island RA	
A31	31	31		VE7PQA	147.2800	+	0.600	141.3	141.3	FM	Parksville	ORCA	IRLP: 1180
A32	32	32		VA7LPG	444.3000	+	5.000	141.3		FM	Nanose Bay	VE7IT	IRLP: 1130
A33	33	33	†	VE7KU	147.2400	+	0.600	141.3	141.3	FM	Port Alberni	Arrowsmith ARC	4000', solar, IRLP: 1120
A34	34	34	†	VE7KU	444.4500	+	5.000	141.3		FM	Salt Spring Island	Arrowsmith ARC	
A35	35	35		VE7RTU	444.7500	+	5.000	100.0		FM	Port Alberni		
A36	36	36		VE7ISC	146.6400	-	0.600	141.3	141.3	FM/C4FM	Nanaimo	NARA	IRLP: 1003
A37	37	37		VE7DJA	443.9000	+	5.000	141.3	141.3	FM	Nanaimo	NARA	600', 30W
A38	38	38		VA7ANI	146.9800	-	0.600	141.3	141.3	FM	Nanaimo	NARA	500', 30W
A39	39	39	∩	VA7RFR	147.0800	+	0.600	141.3	141.3	FM	Parksville	VA7DMN	IRLP: 1179
A40	40	40	∩	VA7VIU	443.0000	+	5.000	141.3	141.3	FM	Nanaimo	CECA	
A41	41	41	∩	VE7IPM	442.5250	+	5.000	141.3	141.3	FM	Nanaimo	VA7MPG	
A42	42	42	∩	VE7DNR	442.4500	+	5.000	141.3	141.3	FM	Ladysmith	VE7LSE	
A43	43	43		VE7GFD	444.9000	+	5.000	141.3	141.3	FM	Gabriola Island Fire Hall		
A44	44	44		VE7DXH	145.4100	-	0.600	141.3		FM	Ladysmith		
A45	45	45		VE7RVC	145.4700	-	0.600	127.3		FM	Mt Sicker, Duncan	CVARS	
				VE7AQW	52.8700	-	1.700	141.3		FM	Duncan	CVARS	
A46	46	46		VE7RSI	147.3200	+	0.600	88.5	88.5	FM	Salt Spring Island	Salt Spring Is ARC	Solar, Packet (without tone)
A47	47	47		VE7RPG	444.4500	+	5.000	103.5	103.5	FM	Salt Spring Island	Salt Spring Is ARC	
A48	48	48		VE7EMG	444.3750	+	5.000	88.5	88.5	FM	Salt Spring Island	Salt Spring Is ARC	
A49	49	49	▣	VA7VIC	146.6600	-	0.600	100.0		FM	Salt Spring Island	WARA	
A50	50	50	▣	VE7VIC	146.8400	-	0.600	100.0	100.0	FM	Mt. McDonald	WARA	IRLP: 1030
A51	51	51	▣	VE7USA	444.8750	+	5.000	107.2	107.2	FM	Mt. McDonald	WARA	
A52	52	52	▣	VE7RMT	146.8400	-	0.600	131.8		FM	Tri Mountain	WARA	
A53	53	53	▣	VE7RTC	443.9500	+	5.000	123.0		FM	Mt. McDonald	WARA	Linked to 6m
A54	54	54		VE7RFI	146.9800	-	0.600	103.5	103.5	FM	Mt. McDonald	Cable Workers ARS	CRERCC
A55	55	55		VE7RYF	444.9250	+	5.000	100.0		FM	Survey Mountain	CRDEP	CRERCC
A56	56	56		VE7US	145.1300	-	0.600	114.8		FM	Highlands		CRERCC
A57	57	57		VE7SER	145.2900	-	0.600	167.9	167.9	FM	Mt. Douglas	Saanich EP	
A58	58	58		VE7RFR	147.2400	+	0.600			FM	Victoria	VE7DAT	
C01	59	59		VE7RPT	146.9400	-	0.600			FM	Vancouver		IRLP: 1694
C02	60	60		VE7RHS	145.2700	+	0.600	100.0		FM	Vancouver		IRLP: 1010
C03	61	61		VE7RHS	441.9750	+	5.000			FM	Vancouver		
C04	62	62		VA7IP	145.2900	-	0.600	100.0		FM	Vancouver		
C05	63	63	E	VE7RNV	147.2600	+	0.600			FM	Vancouver		
C06	64	64		VE7RDX	147.3000	+	0.600			FM	Vancouver		
C07	65	65		VE7RCH	147.0400	+	0.600			FM	Burnaby SFU		
C08	66	66		VE7TEL	145.1700	-	0.600			FM	Burnaby		
C09	67	67		VE7FVR	147.0600	+	0.600			FM	Burnaby		
C10	68	68		VE7RBY	145.3500	-	0.600	88.5		NFM	Burnaby		
C11	69	69		VE7RMD	147.1400	+	0.600	79.7		FM	Richmond		
C12	70	70		VE7RSC	147.3600	+	0.600	110.9		FM	Surrey		IRLP: 1736
C13	71	71		VE7RLY	147.3800	+	0.600	110.9		FM	Langley		
C14	72	72		VE7SUN	147.3400	+	0.600	107.2		FM	Delta		
C15	73	73		VE7RMR	146.8000	-	0.600	156.7		FM	Maple Ridge		IRLP: 1910
C16	74	74		VE7RVA	146.6100	-	0.600	110.9		FM	Abbotsford		IRLP: 1461
B01	80	80		APRS	144.3900					FM			APRS
B02	81	81		WINLNK	145.0300					FM			Winlink
B03	82	82		VE7GN	144.9700					FM			Winlink
B04	83	83		VE7DYK	145.7900					FM			Winlink
B05	84	84		VE7DYK	440.1250					FM			Winlink
B06	85	85		VA7EOC	441.0250					FM			Winlink
B07	86	86		VA7EOC	443.4250					FM			Winlink
B08	87	87		VE7TEL	145.0900					FM			Winlink
B09	88	88		VE7TEL	443.4350					FM			Winlink
B10	89	89		VE7LAN	145.0700					FM			Winlink
B11	90	90		VE7DEP	144.4300					FM			Winlink

Simplex:  
• 146.415 - 146.595 Δ = 15 kHz  
• 147.420 - 147.570 Δ = 30 kHz  
• 446.000 - 446.175 Δ = 25 kHz

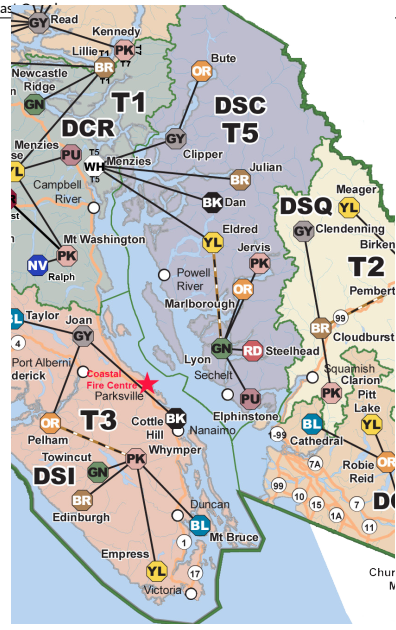
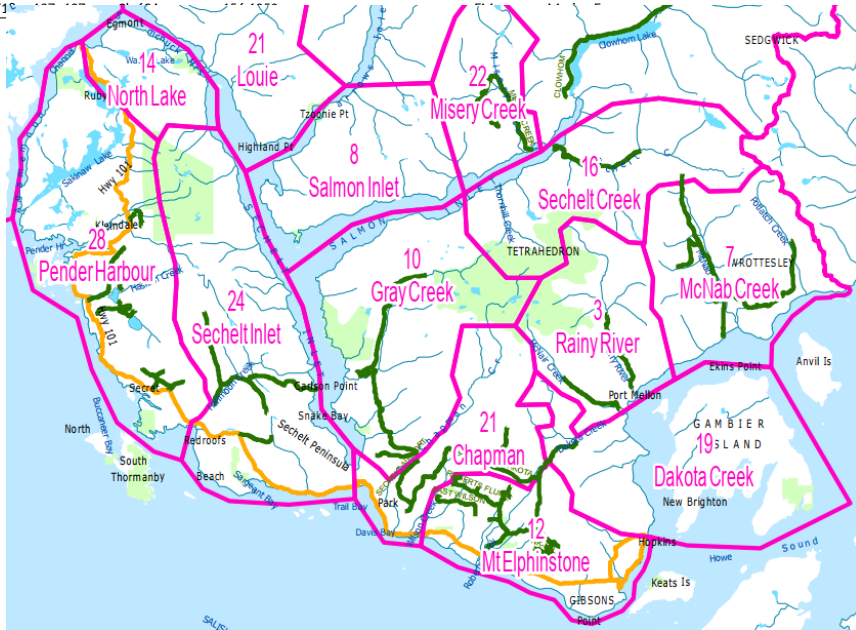
ID-5100	MT-8900	DV-5R	Link	Name	Frequency	Duplex	Offset	Tx Tone	Rx Tone	Mode	Location	Club / Sponsor	Comment (last updated on May 7, 2024)
Z01	91	91		FRS 1	462.5625					FM			
Z02	92	92		FRS 2	462.5875					FM			
Z03	93	93		FRS 3	462.6125					FM			
Z04	94	94		FRS 4	462.6375					FM			
Z05	95	95		FRS 5	462.6625					FM			
Z06	96	96		FRS 6	462.6875					FM			
Z07	97	97		FRS 7	462.7125					FM			
Z08	98	98		FRS 8	467.5625					FM			
Z09	99	99		FRS 9	467.5875					FM			
Z10	100	100		FRS 10	467.6125					FM			
Z11	101	101		FRS 11	467.6375					FM			
Z12	102	102		FRS 12	467.6625					FM			
Z13	103	103		FRS 13	467.6875					FM			
Z14	104	104		FRS 14	467.7125					FM			
Z15	105	105		FRS 15	462.5500					FM			
Z16	106	106		FRS 16	462.5750					FM			
Z17	107	107		FRS 17	462.6000					FM			
Z18	108	108		FRS 18	462.6250					FM			
Z19	109	109		FRS 19	462.6500					FM			
Z20	110	110		FRS 20	462.6750					FM			
Z21	111	111		FRS 21	462.7000					FM			
Z22	112	112		FRS 22	462.7250					FM			
Y01	113	113		FI Ops	155.9100					FM	BC Ferries		Boat Portables
Y02	114	114		Load 1	458.1125					FM	BC Ferries		Loading All
Y03	115	115		Load 2	458.6375					FM	BC Ferries		Loading All
Y04	116	116		Hs Bay	460.1750	+	5.000		97.4	NFM	BC Ferries		Horseshoe Bay Ops
Y05	117	117		Hs/Dept	469.7125				100.0	NFM	BC Ferries		Departure Bay / Horseshoe Bay Traffic
Y06	118	118		Tsawwas	463.7625	+	5.000		97.4	NFM	BC Ferries		Tsawwassen Ops
Y07	119	119		Duke Pt	453.0625					NFM	BC Ferries		Duke Point Ops
Y11	120	120		CH 4A	156.2000	+	4.600		97.4	FM	Marine Freq		Coast Guards Authorized Stations
Y12	121	121		CH 11	156.5500					FM	Marine Freq		Vic Traffic
Y13	122	122		CH 12	156.6000					FM	Marine Freq		Van Traffic
Y14	123	123		CH 14	156.7000					FM	Marine Freq		Ship-to-Ship
Y15	124	124		CH 16	156.8000					FM	Marine Freq		Call Freq
Y16	125	125		Ch 22A	157.1000					FM	Marine Freq		Coast Guards Working
Y17	126	126		Ch 61A	156.0750					FM	Marine Freq		Coast Guards

Vessel-Vessel / Vessel-Tower:  
 \* FI Ops

Langdale  
 \* Load 2

Horseshoe Bay:  
 \* Hs Bay  
 \* Load 2

Departure Bay:  
 \* Load 2  
 \* Hs/Dept



ID	5100	MT-8900	UV-5R	Link	Name	Frequency	Duplex	Offset	Tx Tone	Rx Tone	Mode	Location	Club / Sponsor	Comment (last updated on May 7, 2024)
T01	129				RR-01	150.0800					NFM			
T02	130				RR-02	150.1100					NFM			
T03	131				RR-03	150.1400					NFM			
T04	132				RR-04	150.1850					NFM			
T05	133				RR-05	150.2000					NFM			
T06	134				RR-06	150.2450					NFM			
T07	135				RR-07	150.2600					NFM			
T08	136				RR-08	150.3200					NFM			
T09	137				RR-09	150.3650					NFM			
T10	138				RR-10	150.4100					NFM			
T11	139				RR-11	150.4400					NFM			
T12	140				RR-12	150.5000					NFM			
T13	141				RR-13	150.5300					NFM			
T14	142				RR-14	150.5450					NFM			
T15	143				RR-15	150.5600					NFM			
T16	144				RR-16	150.5900					NFM			
T17	145				RR-17	150.6800					NFM			
T18	146				RR-18	150.7100					NFM			
T19	147				RR-19	150.7700					NFM			
T20	148				RR-20	150.8300					NFM			
T21	149				RR-21	151.0100					NFM			
T22	150				RR-22	151.1300					NFM			
T23	151				RR-23	151.1900					NFM			
T24	152				RR-24	151.2200					NFM			
T25	153				RR-25	151.3100					NFM			
T26	154				RR-26	151.3400					NFM			
T27	155				RR-27	151.3700					NFM			
T28	156				RR-28	151.4300					NFM			
T29	157				RR-29	151.4600					NFM			
T30	158				RR-30	151.4900					NFM			
T31	159				RR-31	151.5200					NFM			
T32	160				RR-32	151.5800					NFM			
T33	161				RR-33	151.6100					NFM			
T34	162				RR-34	151.6400					NFM			
T35	163				RR-35	151.6700					NFM			
T36	164				LAAD 1	154.1000					NFM			
T37	165				LAAD 2	158.9400					NFM			
T38	166				LAAD 3	154.3250					NFM			
T39	167				LAAD 4	173.3700					NFM			
U01	168				Gold	163.8300					NFM			
U02	169				Silver	163.8900					NFM			
U03	170				Copper	164.9100					NFM			
U04	171				Nickel	159.2700					NFM			
U05	172				Bronze	163.9800					NFM			
U06	173				Red	163.9350	-	0.870	151.4		NFM			RD
U07	174				Purple	163.9650	-	0.870	151.4		NFM			PU
U08	175				Green	163.9950	-	0.870	151.4		NFM			GN
U09	176				Black	164.2650	-	0.870	131.8		NFM			BK
U10	177				FIRE A1	167.6700	-	4.740						Forest Fire Dispatch
U11	178				FIRE A2	166.7100	-	4.020	114.8					Forest Fire Dispatch
U12	179				FIRE A3	168.8850	-	4.980						Forest Fire Dispatch
S00	180				Fire	149.2900								Sunshine Coast Fire Depts
S01	181				Fire	153.8600								Roberts Creek Fire Dept
S02	182				Fire	154.0700								Pender, Roberts Creek Fire Dept
S03	183				Fire	155.5650								Sechelt Fire Dept
S04	184				Fire	154.9800								Halfmoon Bay, Egmont Fire Dept
S05	185				Fire	154.7100								Pender Fire Dept
S06	186				Fire	153.3350								Portables?
S07	187				Fire	155.4600	-	5.110						Firecom1 / Interop / EMBC
S08	188				Ambulance	142.1550	-	3.990	123.0					Ambulance Mnt Benson Repeater 2
S09	189				Hospital	469.0750								Hospital
S10	190				SAR1	149.4950								PEPSAR-1
	191				S. Rpt	164.5950			203.5		FM			South Repeater / Gibsons Simplex
	192				N. Rpt	166.0050			196.6		FM			North Repeater / Pender Simplex
	193				Sechelt	170.9850			156.7		FM			Sechelt Simplex
V00	194				PublicW	143.0000								Public Works
V01	195				HW1	143.4450	+	5.350						Public Works Tones are either 77.0, 114.8, 131.8, or 151.4
V02	196				HW2	143.2950	+	4.990						Public Works Tones are either 77.0, 114.8, 131.8, or 151.4
V03	197				HW3	143.4150	+	5.170						Public Works Tones are either 77.0, 114.8, 131.8, or 151.4
V04	198				HW4	143.8950	+	4.960						Public Works Tones are either 77.0, 114.8, 131.8, or 151.4