




Sunshine Coast Emergency Communications


<box 70% red>

- See <https://scarcs.ca/ecommsceec> for an overview of the program.
- Keep an up-to-date  [printed copy](#) of this page (last modified on 2019/08/04 20:43).
- Also print a few copies of the [radiogram](#) from [PERCS](#).

</box>

Initial Actions in the Event of an Emergency

In the event of a significant emergency affecting communications across the Coast, all amateur radio operators should, if it is safe to do so:

- Monitor the VE7RXZ repeater on VHF 147.220 MHz + T100.0 for traffic or requests for assistance from VE7SCE.
- If able, also monitor simplex VHF  **Fix Me!** : 146.490 MHz and/or 146.565 MHz for traffic or request for assistance from VE7SCE.
- If able, monitor EMBC HF frequencies for information (see [below](#)).

Note that VE7SCE will **not** likely use HF for local communications on the Sunshine Coast, however relays may be required for another station on frequency.

Declaration of State of Emergency by the SCRD EOC

The following will be broadcast from VE7SCE on VE7RXZ 147.220 MHz + T100.0 and/or via Simplex frequencies:

<box 100% round blue |**Taking Control of the Net**>

- All stations, all stations, all stations:
- This is VE7SCE – Sunshine Coast Regional District Emergency Operations Centre, Sechelt, British Columbia.[†]
- A [LOCAL / REGIONAL / PROVINCIAL] State of Emergency has been declared, I say again:
a [LOCAL / REGIONAL / PROVINCIAL] State of Emergency has been declared.
- This frequency is now in use by VE7SCE and all stations not having emergency traffic are requested to remain clear.
- If you have traffic concerning safety of life or property in the Sunshine Coast Regional District, and you are unable to contact 911, relay your traffic to this station.
- Otherwise, if it is safe to do so, all station operators within the SCRD region are requested to remain monitoring this frequency as your assistance may be requested.
- This is VE7SCE, SCRD EOC Net Control monitoring...

</box>

<box 100% round blue |**Taking Check ins**>

- All stations, all stations, all stations:
- This is VE7SCE – Sunshine Coast Regional District Emergency Operations Centre, Sechelt, British Columbia.[†]
- Stations within the SCRD region are requested to check in now with your callsign, name and location.
- Once checked in you must inform SCRD Net Control if you intend to leave the frequency.
- This is VE7SCE standing by ...

</box>

[†]As we share a frequency with [W7AVM](#) on Whidbey Island in Washington State, the full SCRD name and location will be used initially to avoid any confusion should our traffic be heard south of the border.

HF Emergency Frequencies



: Sources?

Description	Frequency [MHz]	Mode
EMBC 80m Primary Night	3.735	LSB Phone
EMBC 80m Secondary Night	3.745	LSB Phone
EMBC 40m Primary Day	7.060	LSB Phone
EMBC 40m Secondary Day	7.070	LSB Phone
EMBC DATA	3.613.50	USB DATA
EMBC DATA	7.089.50	USB DATA
VE7SWF South West EMBC PREOC	14.135	USB Phone
VE7SWF South West EMBC PREOC	21.120	USB Phone
VE7KAZ Kamloops EMBC PREOC RMS	5.371.50	USB DATA [†]
VE7RBH Smithers, BC Winlink RMS	3.623.50 / 7.063	USB DATA [†]
WASHST 01 Washington State	3.985	LSB Phone
WASHST 02 Washington State	3.994	LSB Phone
WASHST 03 Washington State	7.245	LSB Phone
BCPSN: BC Public Service Net	3.729	LSB Phone
ALASKA Emergency Net	14.292	USB Phone
EMCOM A	3.675	LSB Phone
EMCOM B	7.135	LSB Phone
EMCOM C	14.135	USB Phone
EMCOM D	18.135	USB Phone
EMCOM E	21.235	USB Phone
EMCOM F	28.235	USB Phone
OREGON	3.980	LSB Phone
EMBC:	Emergency Management BC Frequencies	
WASHST:	Washington State Emergency Frequencies	
EMCOM:	IARU / RAC Canadian Emergency Frequencies	
OREGON	Oregon State Emergency Net Frequency	

[†]Winlink RMS Station

National HF Emergency Communications Frequencies

Source: [RAC](#)

The following frequencies and modes have been pre-determined for suggested use of the Amateur Radio Emergency Service during a declared emergency, or a disaster declared or otherwise, occurring anywhere in Canada. These frequencies have been registered with the International Amateur Radio Union (IARU) for its listings of Canadian national emergency frequencies in [IARU Region 2](#).

These are suggested frequencies and should not be construed as meaning that other HF frequencies may not be considered for Emcomm operations.

No Amateur Radio operator or group has exclusive ownership of any particular frequency on any band and, while common sense and courtesy logically would dictate that other Radio Amateurs should keep clear of frequencies being used for emergency or disaster operations, the affected ARES Net Control Station (NCS) must be prepared to move up or down from the pre-determined frequency, as required, in order to conduct operations. Entering into an on-air argument must be avoided.

	Single Sideband		CW		Digital	
Band	Frequency	Tactical	Frequency	Tactical	Frequency	Tactical
80 M	3.675 MHz LSB	Alfa	3.535 MHz	Golf	3.596 MHz	Mike
40 M	7.135 MHz LSB	Bravo	7.035 MHz	Hotel	7.096 MHz	November
20 M	14.135 MHz USB	Charlie	14.035 MHz	India	14.096 MHz	Oscar
17 M	18.135 MHz USB	Delta	18.075 MHz	Juliet	18.096 MHz	Papa
15 M	21.235 MHz USB	Echo	21.035 MHz	Kilo	21.096 MHz	Quebec
10 M	28.235 MHz USB	Foxtrot	28.035 MHz	Lima	28.096 MHz	Romeo

Other Frequencies

- [BCARCC Repeater Frequencies](#): [Vancouver Island](#), [Vancouver](#)
- RAC National Emergency Frequencies: <https://wp.rac.ca/national-hf-emergency-communications-frequencies/>
- [Repeater Book](#): The phone app is also highly recommended.
- [Canadian Spectrum Management System Data](#) (Formerly known as TAFL)
 - [Search the TAFL](#)
 - [TAFL Map](#) (118 MHz - 525 MHz in Sechelt. Click **New** in green box on top left to change)
- [RadioReference](#)

Regular Emergency Nets

Net	Day	Time	Frequency
Alaska Emergency Net	Mon – Fri	09:30 LT	14.292 MHz
Canadian Red Cross Net: Ottawa Station	Sundays	11:00 LT (winter) noon LT (summer)	14.125 MHz
BC Public Service Net	Daily	17:30 hrs LT (winter) 18:30 hrs (summer)	3.729 MHz
VE7PEP Simplex	Wednesdays	18:30 – 19:10 LT	147.570 MHz
The purpose of the net is to make contact with EOCs in the Capital Regional District.			
VE7PEP HF  : Source?	Wednesdays	19:00 LT	3.735 MHz
VE7PEP ITS	Wednesdays	19:15 – 19:40 LT	Island Trunk System
The purpose of the net is to make contact with EOCs in the Vancouver Island Region (VIR) as well as interested amateurs in the VIR. Each of the Regional Districts in the VIR are called in sequence.			
BC and Yukon NTS Net	Daily	19:30 LT	3.716 MHz

Island Trunk System

Source: islandtrunksystem.org

City	Frequency	Offset	Tone	Callsign
Port McNeill	146.940	-		VE7RNI
Woss Lake	146.880	-		VE7RWV
Sayward	146.700	-	141.3	VE7RNC
Campbell River	146.820	-	141.3	VE7RVR
Courtenay	443.700	+	141.3	VE7NIR
Tofino	146.880	-	141.4	VE7TOF
Port Alberni	147.150	+	151.4 [§]	VE7RPA
Nanaimo	145.430	-	141.3	VE7DJA
Nanaimo	444.725	+	141.3	VA7ITS
Chemainus	146.680	-	141.3	VE7RNA
Chemainus	442.600	+	141.3	VE7RNA

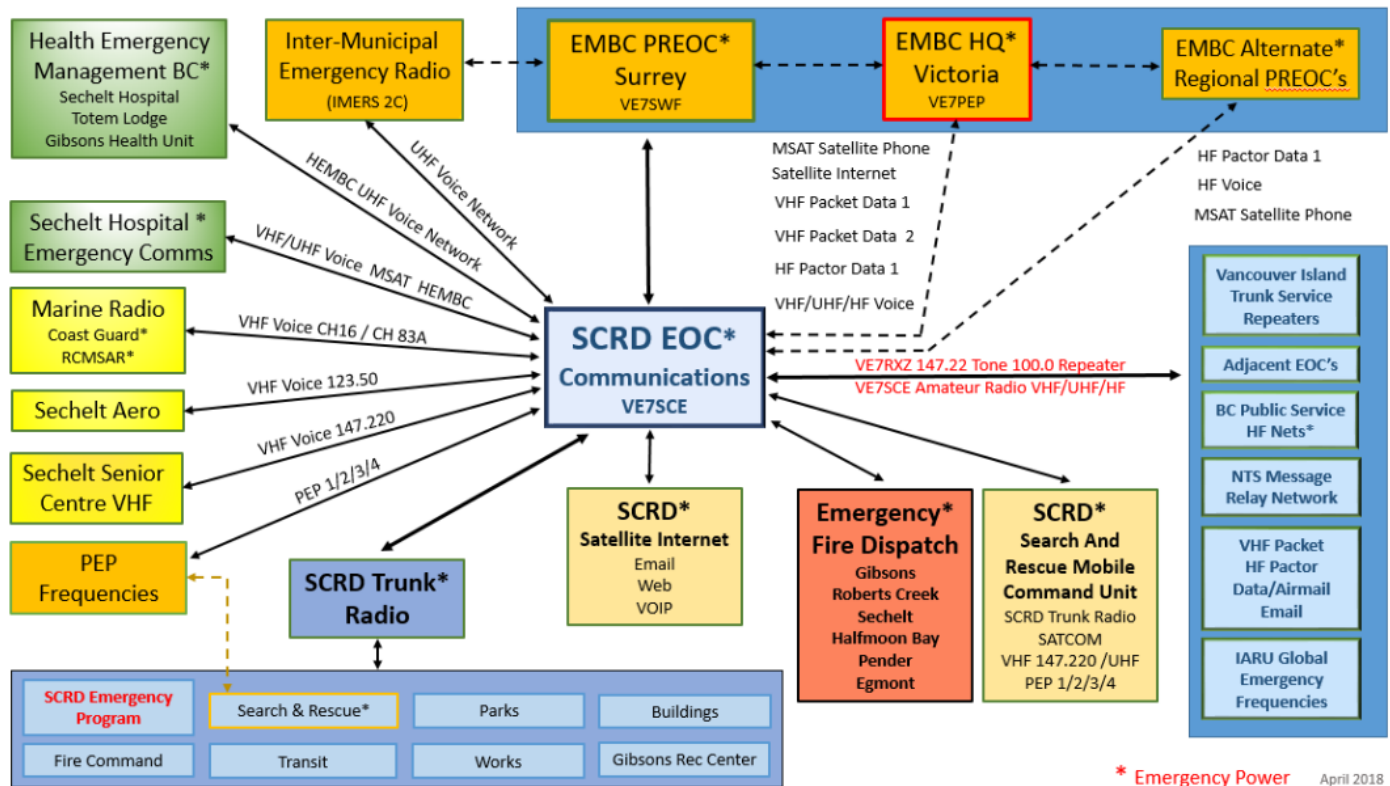
[§] The tone for Port Alberni seems to be T151.4 instead of T141.3.

Other links

- SCEP: <https://www.scrd.ca/Emergency-Program>, emergency.program@scrd.ca, 604-885-6887
- SATERN - Salvation Army Emergency: <http://www.saturn.org/>
- Winlink: <https://www.winlink.org>

SCEP Diagram

- Sunshine Coast Emergency Program – Emergency Radio: <http://www.scrd.ca/Emergency-Radio>
- SCRD EOC Radio Room Winlink email address: ve7sce@winlink.org



SCRD Emergency Radio Station VE7SCE, SCRd HQ Offices, 1975 Field Road

Data/Comms Position 1	Kenwood TM-D710GA VHF/UHF
Data/Comms Position 2	Kenwood TM-D710GA VHF/UHF
Comms/Pactor Position 1	Kenwood TM-D710GA VHF/UHF Kenwood TS480HX 200W HF SCS DR7400 Pactor LDG 200 PRO II Auto Antenna Tuner
Comms/Data Position 2	Kenwood TM-D710GA VHF/UHF
SCRd Trunk Radio	Installed on Buses/SCRd Service & Parks Vehicles. Repeater on Mt. Benson & VE7RXZ as SCA 147.220 MHz is programmed into all SCRd Trunk radio SCEP is the dedicated Emergency Program channel

Emergency Kit

Sources: [PreparedBC](#), [getprepared.gc.ca](#)



Basic emergency kit

- Water: At least two litres of water per person per day; include small bottles that can be carried easily in case of an evacuation order
- Food that won't spoil, such as canned food, energy bars and dried foods (replace food and water once a year)
- Manual can-opener
- Crank or battery-powered flashlight (and extra batteries). Replace batteries once a year.
- Crank, battery-powered radio (and extra batteries) or Weatheradio
- First aid kit
- Extra keys to your car and house
- Some cash in smaller bills, such as \$10 bills and change for payphones
- A copy of your emergency plan and contact information
- If applicable, other items such as prescription medication, infant formula, equipment for people with disabilities, or food, water and medication for your pets or service animal (personalize according to your needs)

Recommended additional items

- Two additional litres of water per person per day for cooking and cleaning
- Candles and matches or lighter (place candles in deep, sturdy containers and do not burn unattended)
- Change of clothing and footwear for each household member
- Sleeping bag or warm blanket for each household member
- Toiletries
- Hand sanitizer
- Utensils
- Garbage bags
- Toilet paper
- Water purifying tablets
- Basic tools (hammer, pliers, wrench, screwdrivers, work gloves, dust mask, pocket knife)
- A whistle (in case you need to attract attention)
- Duct tape (to tape up windows, doors, air vents, etc.)