




# Sunshine Coast Emergency Communications


For an overview of the program, see: <https://scarcs.ca/ecommsceec> <box red 80% | **PDFs To Print:**>

- An up-to-date copy of  [this page](#) (last modified on 2019/08/04 21:14).
- A few copies of the [radiogram](#) from PERCS.
- BCARCC repeater frequencies for [Vancouver Island](#) and [Vancouver](#)

</box>

## Initial Actions in the Event of an Emergency

In the event of a significant emergency affecting communications across the Coast, all amateur radio operators should, if it is safe to do so:

- Monitor the VE7RXZ repeater on VHF 147.220 MHz + T100.0 for traffic or requests for assistance from VE7SCE.
- If able, also monitor simplex VHF  : 146.490 MHz and/or 146.565 MHz for traffic or request for assistance from VE7SCE.
- If able, monitor EMBC HF frequencies for information (see [below](#)).

Note that VE7SCE will **not** likely use HF for local communications on the Sunshine Coast, however relays may be required for another station on frequency.

## Declaration of State of Emergency by the SCRD EOC

The following will be broadcast from VE7SCE on VE7RXZ 147.220 MHz + T100.0 and/or via Simplex frequencies:

<box 100% round blue |**Taking Control of the Net**>

- All stations, all stations, all stations:
- This is VE7SCE – Sunshine Coast Regional District Emergency Operations Centre, Sechelt, British Columbia.<sup>†</sup>
- A [LOCAL / REGIONAL / PROVINCIAL] State of Emergency has been declared, I say again:  
a [LOCAL / REGIONAL / PROVINCIAL] State of Emergency has been declared.
- This frequency is now in use by VE7SCE and all stations not having emergency traffic are requested to remain clear.
- If you have traffic concerning safety of life or property in the Sunshine Coast Regional District, and you are unable to contact 911, relay your traffic to this station.
- Otherwise, if it is safe to do so, all station operators within the SCRD region are requested to remain monitoring this frequency as your assistance may be requested.
- This is VE7SCE, SCRD EOC Net Control monitoring...

</box>

<box 100% round blue |**Taking Check ins**>

- All stations, all stations, all stations:
- This is VE7SCE – Sunshine Coast Regional District Emergency Operations Centre, Sechelt, British Columbia.<sup>†</sup>
- Stations within the SCRD region are requested to check in now with your callsign, name and location.
- Once checked in you must inform SCRD Net Control if you intend to leave the frequency.
- This is VE7SCE standing by ...

</box>

<sup>†</sup>As we share a frequency with [W7AVM](#) on Whidbey Island in Washington State, the full SCRD name and location will be used initially to avoid any confusion should our traffic be heard south of the border.

# HF Emergency Frequencies



: Sources?

| Description                     | Frequency [MHz]                           | Mode                  |
|---------------------------------|---|-----------------------|
| EMBC 80m Primary Night          | 3.735                                     | LSB Phone             |
| EMBC 80m Secondary Night        | 3.745                                     | LSB Phone             |
| EMBC 40m Primary Day            | 7.060                                     | LSB Phone             |
| EMBC 40m Secondary Day          | 7.070                                     | LSB Phone             |
| EMBC DATA                       | 3.613.50                                  | USB DATA              |
| EMBC DATA                       | 7.089.50                                  | USB DATA              |
| VE7SWF South West EMBC PREOC    | 14.135                                    | USB Phone             |
| VE7SWF South West EMBC PREOC    | 21.120                                    | USB Phone             |
| VE7KAZ Kamloops EMBC PREOC RMS  | 5.371.50                                  | USB DATA <sup>†</sup> |
| VE7RBH Smithers, BC Winlink RMS | 3.623.50 / 7.063                          | USB DATA <sup>†</sup> |
| WASHST 01 Washington State      | 3.985                                     | LSB Phone             |
| WASHST 02 Washington State      | 3.994                                     | LSB Phone             |
| WASHST 03 Washington State      | 7.245                                     | LSB Phone             |
| BCPSN: BC Public Service Net    | 3.729                                     | LSB Phone             |
| ALASKA Emergency Net            | 14.292                                    | USB Phone             |
| EMCOM A                         | 3.675                                     | LSB Phone             |
| EMCOM B                         | 7.135                                     | LSB Phone             |
| EMCOM C                         | 14.135                                    | USB Phone             |
| EMCOM D                         | 18.135                                    | USB Phone             |
| EMCOM E                         | 21.235                                    | USB Phone             |
| EMCOM F                         | 28.235                                    | USB Phone             |
| OREGON                          | 3.980                                     | LSB Phone             |
| <b>EMBC:</b>                    | Emergency Management BC Frequencies       |                       |
| <b>WASHST:</b>                  | Washington State Emergency Frequencies    |                       |
| <b>EMCOM:</b>                   | IARU / RAC Canadian Emergency Frequencies |                       |
| <b>OREGON</b>                   | Oregon State Emergency Net Frequency      |                       |

<sup>†</sup>Winlink RMS Station

## National HF Emergency Communications Frequencies

Source: [RAC](#)

The following frequencies and modes have been pre-determined for suggested use of the Amateur Radio Emergency Service during a declared emergency, or a disaster declared or otherwise, occurring anywhere in Canada. These frequencies have been registered with the International Amateur Radio Union (IARU) for its listings of Canadian national emergency frequencies in [IARU Region 2](#).

These are suggested frequencies and should not be construed as meaning that other HF frequencies may not be considered for Emcomm operations.


No Amateur Radio operator or group has exclusive ownership of any particular frequency on any band and, while common sense and courtesy logically would dictate that other Radio Amateurs should keep clear of frequencies being used for emergency or disaster operations, the affected ARES Net Control Station (NCS) must be prepared to move up or down from the pre-determined frequency, as required, in order to conduct operations. Entering into an on-air argument must be avoided.

|      | Single Sideband |          | CW         |          | Digital    |          |
|------|-----------------|----------|------------|----------|------------|----------|
| Band | Frequency       | Tactical | Frequency  | Tactical | Frequency  | Tactical |
| 80 M | 3.675 MHz LSB   | Alfa     | 3.535 MHz  | Golf     | 3.596 MHz  | Mike     |
| 40 M | 7.135 MHz LSB   | Bravo    | 7.035 MHz  | Hotel    | 7.096 MHz  | November |
| 20 M | 14.135 MHz USB  | Charlie  | 14.035 MHz | India    | 14.096 MHz | Oscar    |
| 17 M | 18.135 MHz USB  | Delta    | 18.075 MHz | Juliet   | 18.096 MHz | Papa     |
| 15 M | 21.235 MHz USB  | Echo     | 21.035 MHz | Kilo     | 21.096 MHz | Quebec   |
| 10 M | 28.235 MHz USB  | Foxtrot  | 28.035 MHz | Lima     | 28.096 MHz | Romeo    |

## Other Frequencies

- [Repeater Book](#): The phone app is also highly recommended.
- [Canadian Spectrum Management System Data](#) (Formerly known as TAFL)
  - [Search the TAFL](#)
  - [TAFL Map](#) (118 MHz - 525 MHz in Sechelt. Click **New** in green box on top left to change)
- [RadioReference](#)

## Regular Emergency Nets

| Net   | Day        | Time  | Frequency                           |
|---|------------|---|-------------------------------------|
| <a href="#">Alaska Emergency Net</a>  | Mon – Fri  | 09:30 LT                                    | 14.292 MHz                          |
| <a href="#">Canadian Red Cross Net: Ottawa Station</a>  | Sundays    | 11:00 LT (winter)<br>noon LT (summer)       | 14.125 MHz                          |
| <a href="#">BC Public Service Net</a>   | Daily      | 17:30 hrs LT (winter)<br>18:30 hrs (summer) | 3.729 MHz                           |
| <a href="#">VE7PEP Simplex</a>  | Wednesdays | 18:30 – 19:10 LT                            | 147.570 MHz                         |
| The purpose of the net is to make contact with EOCs in the Capital Regional District.   |            |   |                                     |
| <a href="#">VE7PEP HF</a><br> : Source?  | Wednesdays | 19:00 LT                                    | 3.735 MHz                           |
| <a href="#">VE7PEP ITS</a>  | Wednesdays | 19:15 – 19:40 LT                            | <a href="#">Island Trunk System</a> |
| The purpose of the net is to make contact with EOCs in the Vancouver Island Region (VIR) as well as interested amateurs in the VIR. Each of the Regional Districts in the VIR are called in sequence. |            |   |                                     |
| <a href="#">BC and Yukon NTS Net</a>  | Daily      | 19:30 LT                                    | 3.716 MHz                           |

## Island Trunk System

Source: [islandtrunksystem.org](http://islandtrunksystem.org)

| City           | Frequency | Offset | Tone               | Callsign |
|----------------|-----------|--------|--------------------|----------|
| Port McNeill   | 146.940   | -      |                    | VE7RNI   |
| Woss Lake      | 146.880   | -      |                    | VE7RWV   |
| Sayward        | 146.700   | -      | 141.3              | VE7RNC   |
| Campbell River | 146.820   | -      | 141.3              | VE7RVR   |
| Courtenay      | 443.700   | +      | 141.3              | VE7NIR   |
| Tofino         | 146.880   | -      | 141.4              | VE7TOF   |
| Port Alberni   | 147.150   | +      | 151.4 <sup>§</sup> | VE7RPA   |
| Nanaimo        | 145.430   | -      | 141.3              | VE7DJA   |
| Nanaimo        | 444.725   | +      | 141.3              | VA7ITS   |
| Chemainus      | 146.680   | -      | 141.3              | VE7RNA   |
| Chemainus      | 442.600   | +      | 141.3              | VE7RNA   |

<sup>§</sup> The tone for Port Alberni seems to be T151.4 instead of T141.3.

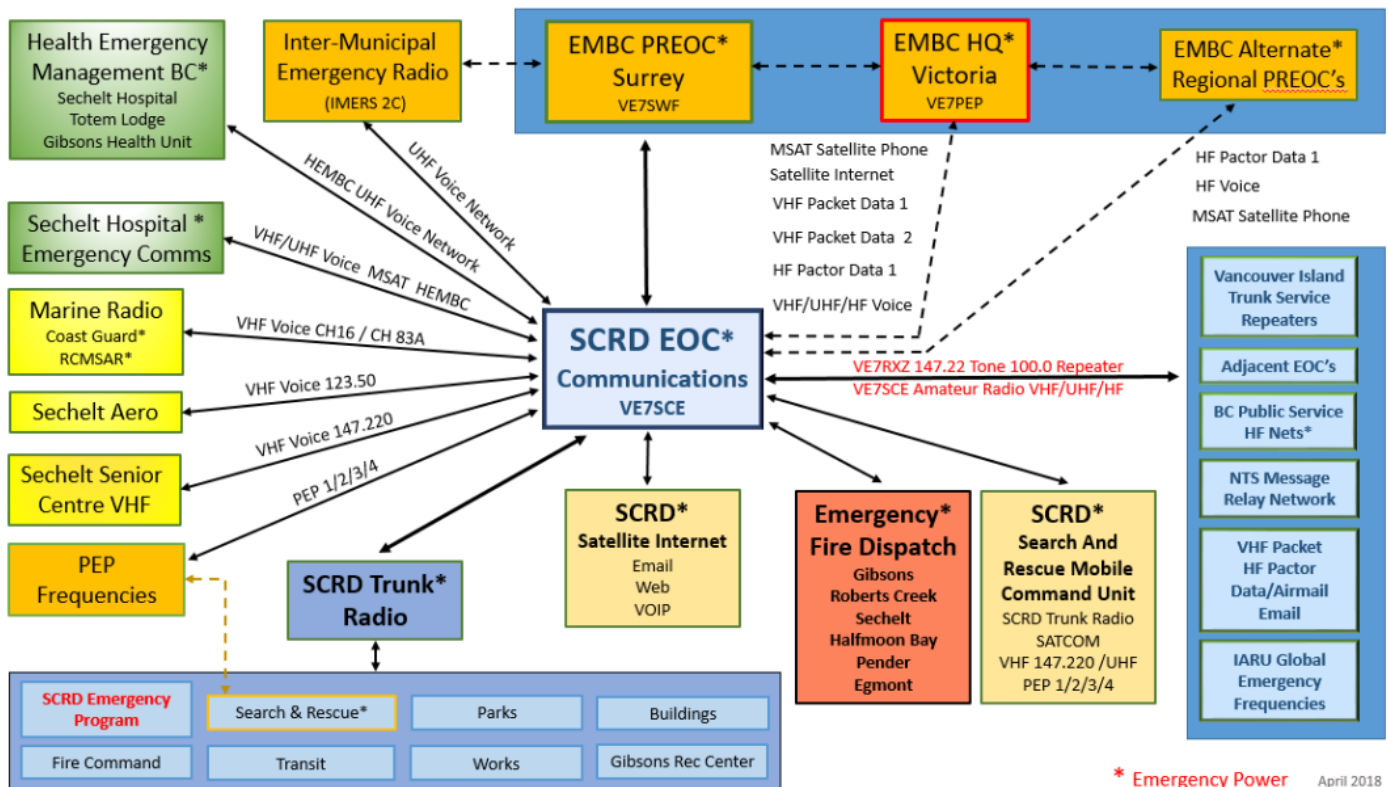
## Other links

- SATERN - Salvation Army Emergency: <http://www.satern.org/>
- Winlink: <https://www.winlink.org>

## SCEP Details

SCRD Emergency Radio Station VE7SCE, SCR D HQ Offices, 1975 Field Road:

- Web pages: <https://www.scrd.ca/Emergency-Program>, <http://www.scrd.ca/Emergency-Radio>
- Contact: [emergency.program@scrd.ca](mailto:emergency.program@scrd.ca), 604-885-6887
- Winlink email address: [ve7sce@winlink.org](mailto:ve7sce@winlink.org)



## VE7SCE Radio Stations

|                         |  |
|-------------------------|--|
| Data/Comms Position 1   | Kenwood TM-D710GA VHF/UHF  |
| Data/Comms Position 2   | Kenwood TM-D710GA VHF/UHF  |
| Comms/Pactor Position 1 | Kenwood TM-D710GA VHF/UHF<br>Kenwood TS480HX 200W HF<br>SCS DR7400 Pactor<br>LDG 200 PRO II Auto Antenna Tuner   |
| Comms/Data Position 2   | Kenwood TM-D710GA VHF/UHF  |
| SCR D Trunk Radio       | Installed on Buses/SCR D Service & Parks Vehicles.<br>Repeater on Mt. Benson & VE7RXZ as SCA 147.220 MHz is programmed into all SCR D Trunk radio<br>SCEP is the dedicated Emergency Program channel |

# Emergency Preparedness

Sources: [PreparedBC](#), [getprepared.gc.ca](#)



## Basic emergency kit

- Water: At least two litres of water per person per day; include small bottles that can be carried easily in case of an evacuation order
- Food that won't spoil, such as canned food, energy bars and dried foods (replace food and water once a year)
- Manual can-opener
- Crank or battery-powered flashlight (and extra batteries). Replace batteries once a year.
- Crank, battery-powered radio (and extra batteries) or Weatheradio
- First aid kit
- Extra keys to your car and house
- Some cash in smaller bills, such as \$10 bills and change for payphones
- A copy of your emergency plan and contact information
- If applicable, other items such as prescription medication, infant formula, equipment for people with disabilities, or food, water and medication for your pets or service animal (personalize according to your needs)

## Recommended additional items

- Two additional litres of water per person per day for cooking and cleaning
- Candles and matches or lighter (place candles in deep, sturdy containers and do not burn unattended)
- Change of clothing and footwear for each household member
- Sleeping bag or warm blanket for each household member
- Toiletries
- Hand sanitizer
- Utensils
- Garbage bags
- Toilet paper
- Water purifying tablets
- Basic tools (hammer, pliers, wrench, screwdrivers, work gloves, dust mask, pocket knife)
- A whistle (in case you need to attract attention)
- Duct tape (to tape up windows, doors, air vents, etc.)