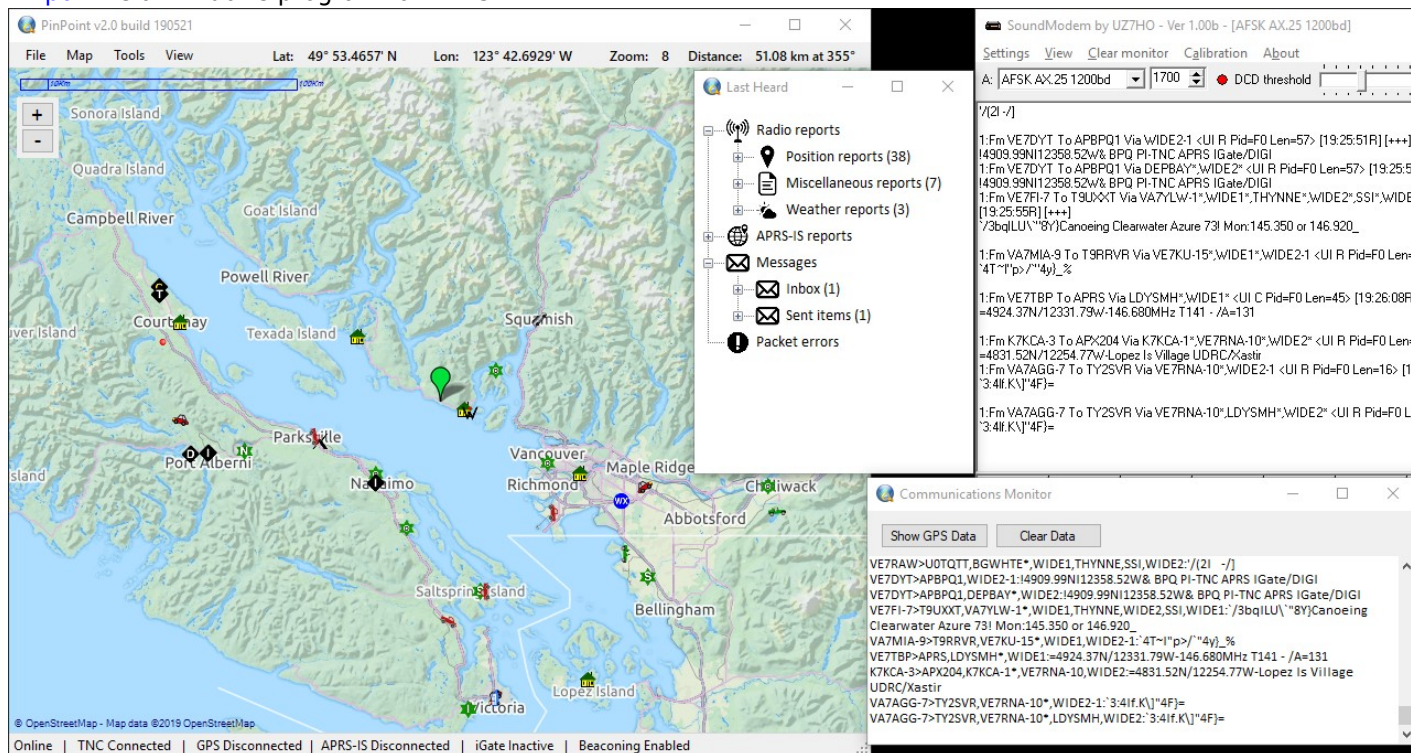


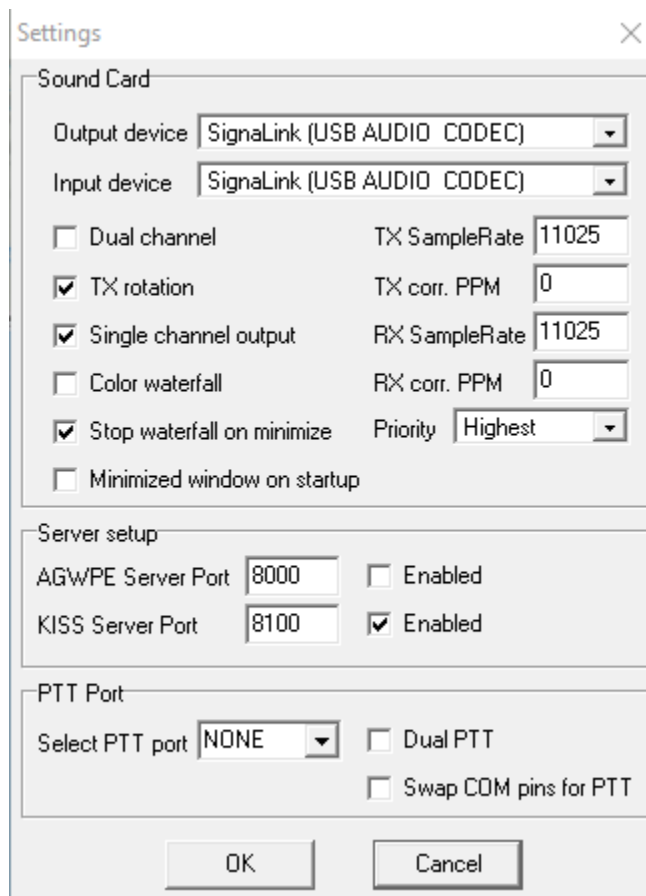
APRS

[Pinpoint](#) is a Windows program for APRS.



Configuration


To use with Signalink, see the [Packet How-to](#).



The screenshot shows a 'Settings' dialog box with three main sections: 'Sound Card', 'Server setup', and 'PTT Port'. The 'Sound Card' section includes dropdowns for 'Output device' and 'Input device', both set to 'Signalink (USB AUDIO CODEC)'. It also has checkboxes for 'Dual channel', 'TX rotation', 'Single channel output', 'Color waterfall', 'Stop waterfall on minimize', and 'Minimized window on startup'. Numerical fields for 'TX SampleRate', 'TX corr. PPM', 'RX SampleRate', and 'RX corr. PPM' are set to 11025 and 0 respectively. A 'Priority' dropdown is set to 'Highest'. The 'Server setup' section has text boxes for 'AGWPE Server Port' (8000) and 'KISS Server Port' (8100), each with an 'Enabled' checkbox. The 'PTT Port' section has a 'Select PTT port' dropdown set to 'NONE' and checkboxes for 'Dual PTT' and 'Swap COM pins for PTT'. 'OK' and 'Cancel' buttons are at the bottom.

Section	Option	Value
Sound Card	Output device	Signalink (USB AUDIO CODEC)
	Input device	Signalink (USB AUDIO CODEC)
	Dual channel	<input type="checkbox"/>
	TX rotation	<input checked="" type="checkbox"/>
	Single channel output	<input checked="" type="checkbox"/>
	Color waterfall	<input type="checkbox"/>
	Stop waterfall on minimize	<input checked="" type="checkbox"/>
	Minimized window on startup	<input type="checkbox"/>
	TX SampleRate	11025
	TX corr. PPM	0
Server setup	AGWPE Server Port	8000
	AGWPE Server Port Enabled	<input type="checkbox"/>
	KISS Server Port	8100
	KISS Server Port Enabled	<input checked="" type="checkbox"/>
PTT Port	Select PTT port	NONE
	Dual PTT	<input type="checkbox"/>
	Swap COM pins for PTT	<input type="checkbox"/>

Once the radio, the Signalink, and the Soundmodem are configured, start PinPoint and change these settings:

 Options — □ ×

APRS

TNC

GPS

Map

APRS-IS

Misc

Donate

My APRS Call sign + SSID

VE7HZF


APRS Path

WIDE1-1

Position comment

Station icon

<



>

Overlay (type table + symbol directly in box + Enter key)

/y

APRS DigiPeater settings

☐ Enable APRS DigiPeater (Fill-in Digi. For non-KISS TNC's only for the moment)

My DigiPeater alias

WIDE1-1

APRS Position Beacons settings

☒ Enable APRS beacons

Beacon at least every

30

minutes

0

seconds

Beacon a minimum of every

5

km

Beacon when heading changes more than

35

degrees

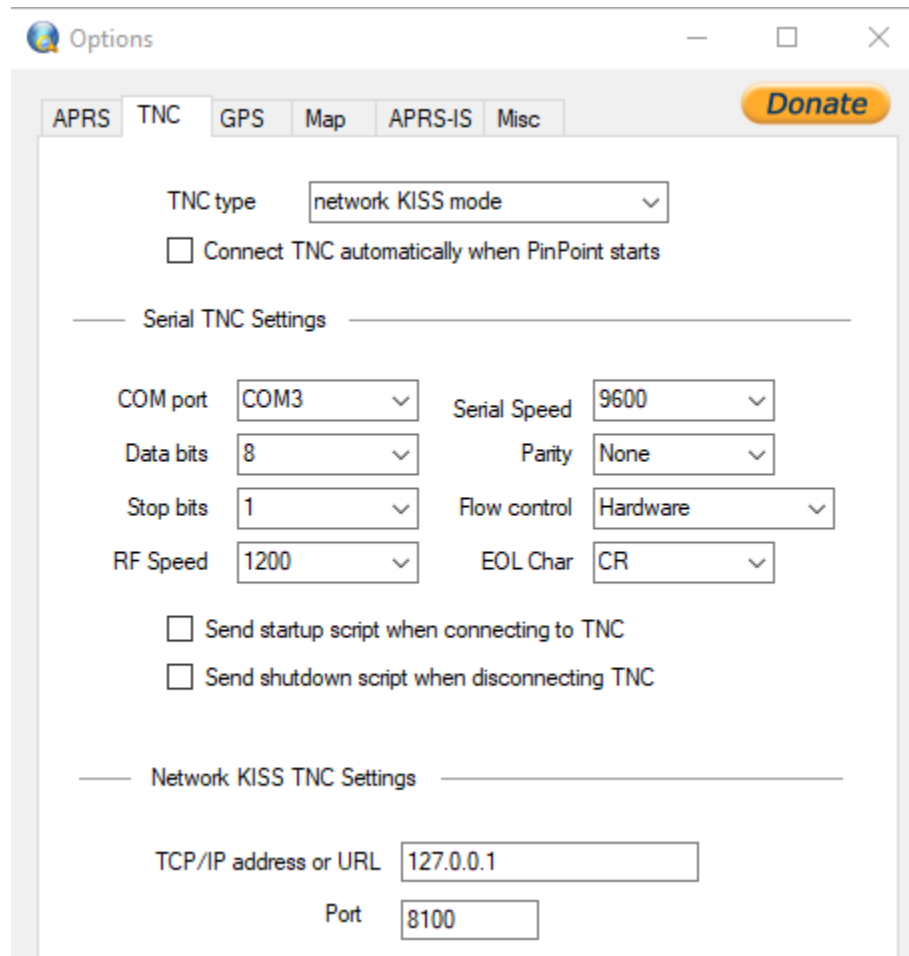
☒ Beacon my altitude

☐ Beacon my course and speed

Maximum speed reported via radio

105

km/h



The screenshot shows the 'Options' window with the 'TNC' tab selected. The window has a title bar with a minimize button, a maximize button, and a close button. Below the title bar is a navigation bar with tabs for 'APRS', 'TNC', 'GPS', 'Map', 'APRS-IS', and 'Misc'. A yellow 'Donate' button is located in the top right corner of the window. The 'TNC' tab contains the following settings:

- TNC type:** A dropdown menu set to 'network KISS mode'.
- ☐ Connect TNC automatically when PinPoint starts
- Serial TNC Settings:**
 - COM port:** A dropdown menu set to 'COM3'.
 - Serial Speed:** A dropdown menu set to '9600'.
 - Data bits:** A dropdown menu set to '8'.
 - Parity:** A dropdown menu set to 'None'.
 - Stop bits:** A dropdown menu set to '1'.
 - Flow control:** A dropdown menu set to 'Hardware'.
 - RF Speed:** A dropdown menu set to '1200'.
 - EOL Char:** A dropdown menu set to 'CR'.
- ☐ Send startup script when connecting to TNC
- ☐ Send shutdown script when disconnecting TNC
- Network KISS TNC Settings:**
 - TCP/IP address or URL:** A text input field containing '127.0.0.1'.
 - Port:** A text input field containing '8100'.

Note how the Network Kiss Port (8100) in the PinPoint settings needed to be changed to match the SoundModem settings.

Also, the Serial TNC settings don't matter since they are not being used by Kiss Network.