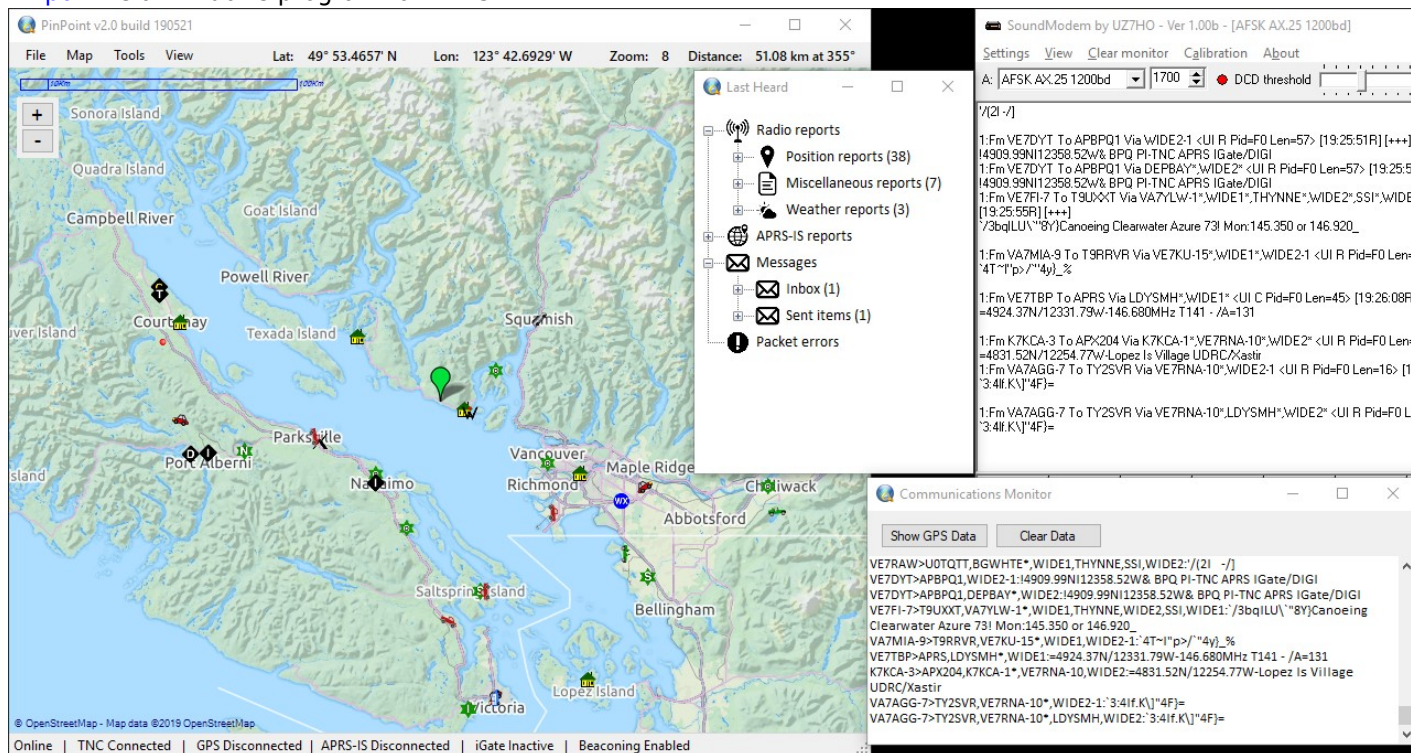


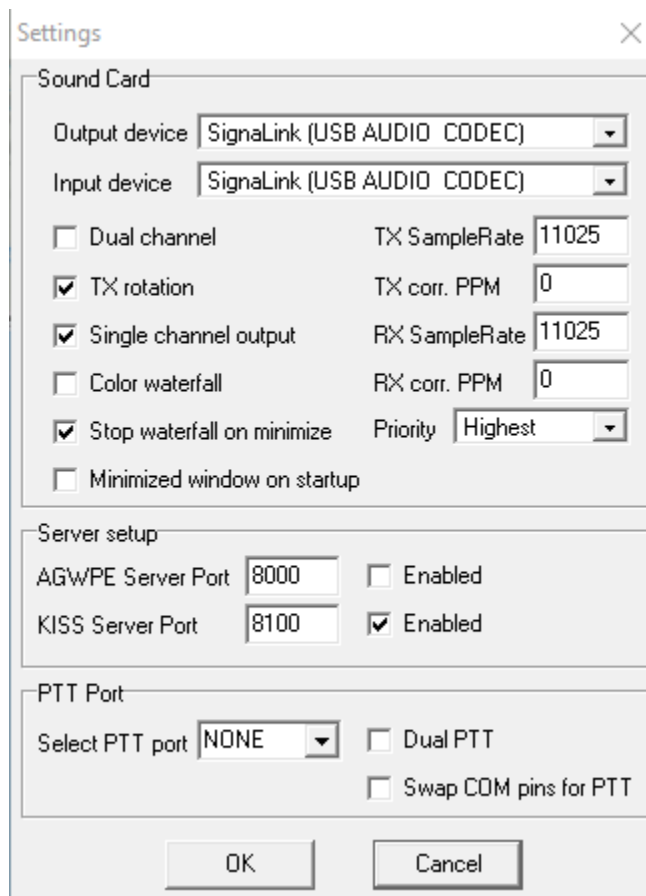
APRS

[Pinpoint](#) is a Windows program for APRS.



Configuration


To use with [Signalink](#), see the [Packet How-to](#).



The screenshot shows a 'Settings' dialog box with a close button (X) in the top right corner. It is divided into three main sections: 'Sound Card', 'Server setup', and 'PTT Port'. The 'Sound Card' section includes dropdowns for 'Output device' and 'Input device', both set to 'Signalink (USB AUDIO CODEC)'. It also has checkboxes for 'Dual channel' (unchecked), 'TX rotation' (checked), 'Single channel output' (checked), 'Color waterfall' (unchecked), 'Stop waterfall on minimize' (checked), and 'Minimized window on startup' (unchecked). To the right of these are input fields for 'TX SampleRate' (11025), 'TX corr. PPM' (0), 'RX SampleRate' (11025), 'RX corr. PPM' (0), and a 'Priority' dropdown set to 'Highest'. The 'Server setup' section has input fields for 'AGWPE Server Port' (8000) and 'KISS Server Port' (8100), each with an 'Enabled' checkbox. The 'AGWPE' checkbox is unchecked, and the 'KISS' checkbox is checked. The 'PTT Port' section has a 'Select PTT port' dropdown set to 'NONE', with 'Dual PTT' and 'Swap COM pins for PTT' checkboxes, both of which are unchecked. At the bottom are 'OK' and 'Cancel' buttons.

Section	Option	Value / State
Sound Card	Output device	Signalink (USB AUDIO CODEC)
	Input device	Signalink (USB AUDIO CODEC)
	Dual channel	<input type="checkbox"/>
	TX rotation	<input checked="" type="checkbox"/>
	Single channel output	<input checked="" type="checkbox"/>
	Color waterfall	<input type="checkbox"/>
	Stop waterfall on minimize	<input checked="" type="checkbox"/>
	Minimized window on startup	<input type="checkbox"/>
	TX SampleRate	11025
	TX corr. PPM	0
Server setup	AGWPE Server Port	8000
	AGWPE Enabled	<input type="checkbox"/>
	KISS Server Port	8100
	KISS Enabled	<input checked="" type="checkbox"/>
PTT Port	Select PTT port	NONE
	Dual PTT	<input type="checkbox"/>
	Swap COM pins for PTT	<input type="checkbox"/>

Once the radio, the Signalink, and the Soundmodem are configured, start PinPoint and change these settings:

 Options — □ ×

APRS

TNC

GPS

Map

APRS-IS

Misc

Donate

My APRS Call sign + SSID

VE7HZF


APRS Path

WIDE1-1

Position comment

Station icon

<



>

Overlay (type table + symbol directly in box + Enter key)

/y

APRS DigiPeater settings

☐ Enable APRS DigiPeater (Fill-in Digi. For non-KISS TNC's only for the moment)

My DigiPeater alias

WIDE1-1

APRS Position Beacons settings

☒ Enable APRS beacons

Beacon at least every

30

minutes

0

seconds

Beacon a minimum of every

5

km

Beacon when heading changes more than

35

degrees

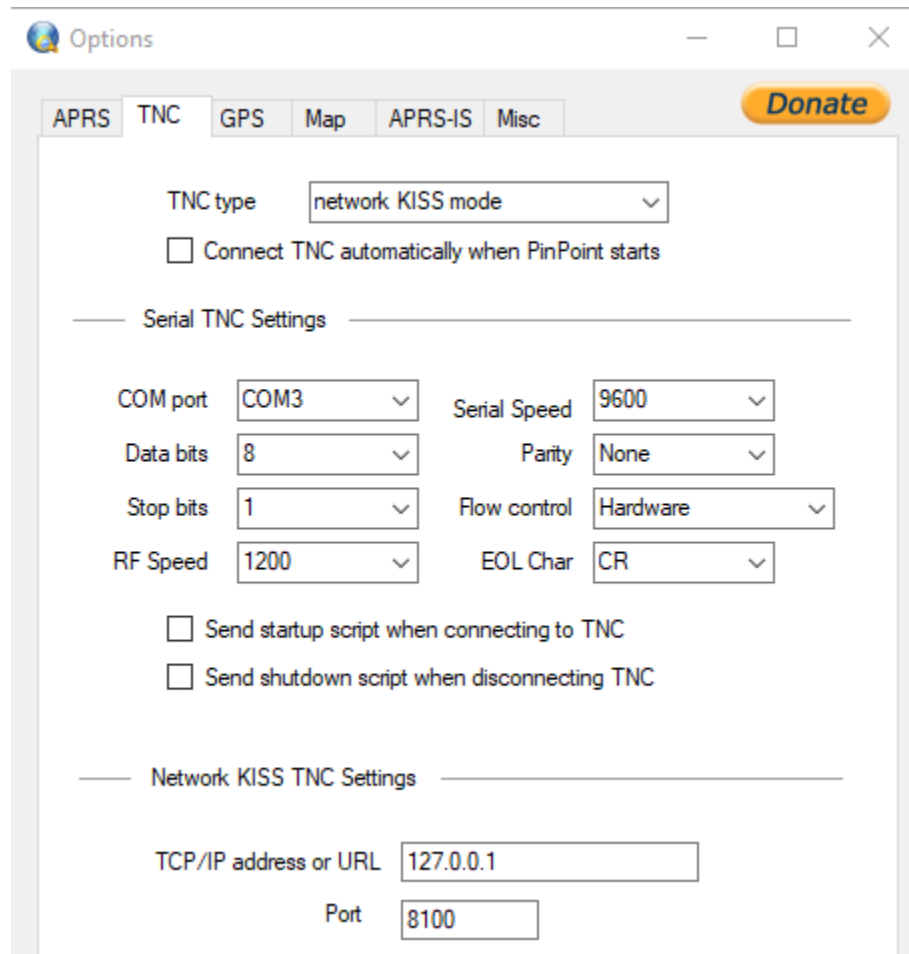
☒ Beacon my altitude

☐ Beacon my course and speed

Maximum speed reported via radio

105

km/h



The screenshot shows the 'Options' window with the 'TNC' tab selected. The window has a title bar with a minimize button, a maximize button, and a close button. Below the title bar is a navigation bar with tabs for 'APRS', 'TNC', 'GPS', 'Map', 'APRS-IS', and 'Misc'. A yellow 'Donate' button is located in the top right corner. The main content area is divided into sections. The first section has a 'TNC type' dropdown menu set to 'network KISS mode' and a checkbox labeled 'Connect TNC automatically when PinPoint starts' which is unchecked. The second section, titled 'Serial TNC Settings', contains several dropdown menus: 'COM port' (COM3), 'Serial Speed' (9600), 'Data bits' (8), 'Parity' (None), 'Stop bits' (1), 'Flow control' (Hardware), 'RF Speed' (1200), and 'EOL Char' (CR). There are also two checkboxes: 'Send startup script when connecting to TNC' and 'Send shutdown script when disconnecting TNC', both of which are unchecked. The third section, titled 'Network KISS TNC Settings', contains a text input field for 'TCP/IP address or URL' with the value '127.0.0.1' and a text input field for 'Port' with the value '8100'.

Options

APRS TNC GPS Map APRS-IS Misc **Donate**

TNC type network KISS mode

☐ Connect TNC automatically when PinPoint starts

Serial TNC Settings

COM port COM3 Serial Speed 9600

Data bits 8 Parity None

Stop bits 1 Flow control Hardware

RF Speed 1200 EOL Char CR

☐ Send startup script when connecting to TNC

☐ Send shutdown script when disconnecting TNC

Network KISS TNC Settings

TCP/IP address or URL 127.0.0.1

Port 8100

Note:

- Network Kiss Port (8100) in the PinPoint settings needed to be changed to match the SoundModem settings.
- Also, the Serial TNC Settings don't matter since they are not being used by Network Kiss.
- See [APRS SSID Recommendations](#) to setup your callsign properly.