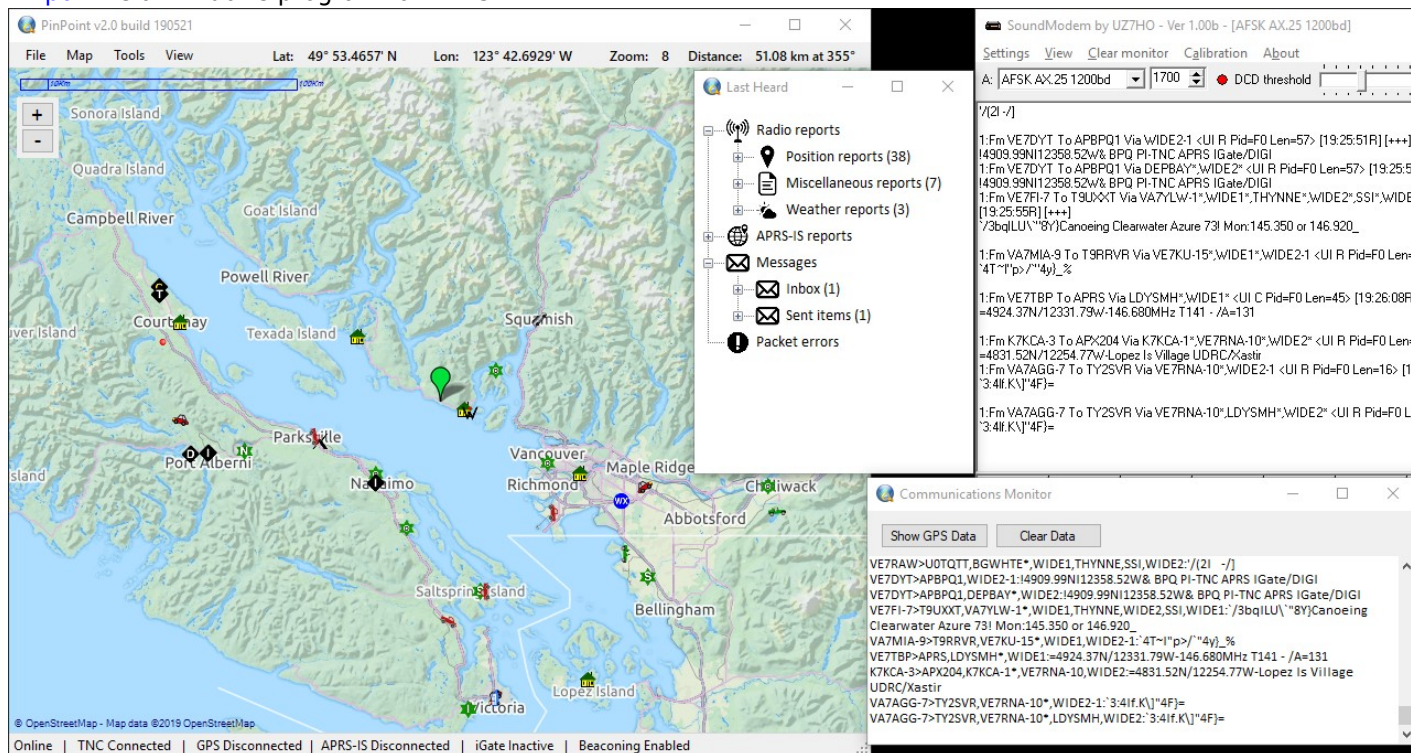


APRS


[Pinpoint](#) is a Windows program for APRS.



Configuration

To use with Signalink, see the [Signalink How-to](#).

Once the radio, the Signalink, and the Soundmodem are configured, start PinPoint and change these settings:

 Options — □ ×

APRS

TNC

GPS

Map

APRS-IS

Misc

Donate

My APRS Call sign + SSID

VE7HZF


APRS Path

WIDE1-1

Position comment

Station icon

<



>

Overlay (type table + symbol directly in box + Enter key)

/y

APRS DigiPeater settings

☐ Enable APRS DigiPeater (Fill-in Digi. For non-KISS TNC's only for the moment)

My DigiPeater alias

WIDE1-1

APRS Position Beacons settings

☒ Enable APRS beacons

Beacon at least every

30

minutes

0

seconds

Beacon a minimum of every

5

km

Beacon when heading changes more than

35

degrees

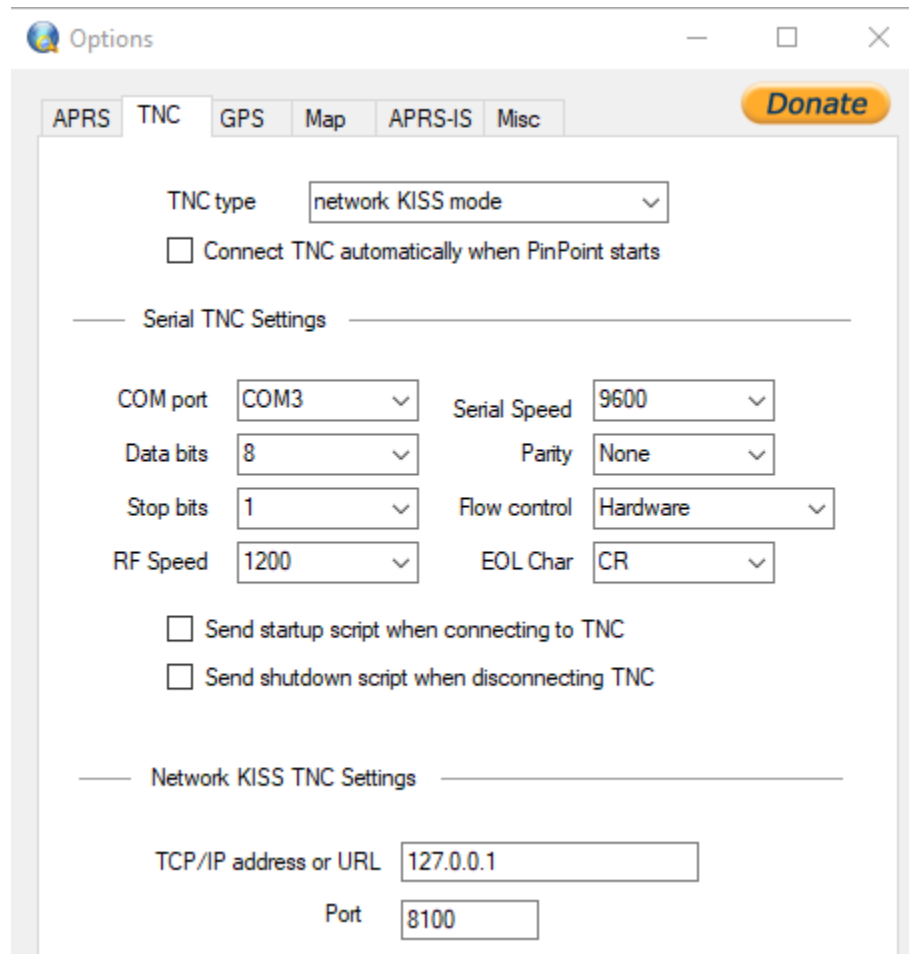
☒ Beacon my altitude

☐ Beacon my course and speed

Maximum speed reported via radio

105

km/h



The screenshot shows the 'Options' window with the 'TNC' tab selected. The 'TNC type' is set to 'network KISS mode'. There is a checkbox for 'Connect TNC automatically when PinPoint starts' which is unchecked. Below this is a section for 'Serial TNC Settings' with fields for 'COM port' (COM3), 'Serial Speed' (9600), 'Data bits' (8), 'Parity' (None), 'Stop bits' (1), 'Flow control' (Hardware), 'RF Speed' (1200), and 'EOL Char' (CR). There are also checkboxes for 'Send startup script when connecting to TNC' and 'Send shutdown script when disconnecting TNC', both unchecked. Below this is a section for 'Network KISS TNC Settings' with fields for 'TCP/IP address or URL' (127.0.0.1) and 'Port' (8100). A 'Donate' button is visible in the top right corner.

Options

APRS TNC GPS Map APRS-IS Misc **Donate**

TNC type network KISS mode

☐ Connect TNC automatically when PinPoint starts

Serial TNC Settings

COM port COM3 Serial Speed 9600

Data bits 8 Parity None

Stop bits 1 Flow control Hardware

RF Speed 1200 EOL Char CR

☐ Send startup script when connecting to TNC

☐ Send shutdown script when disconnecting TNC

Network KISS TNC Settings

TCP/IP address or URL 127.0.0.1

Port 8100

Note:

- Network Kiss Port (8100) in the PinPoint settings needed to be changed to match the SoundModem settings.
- Also, the Serial TNC Settings don't matter since they are not being used by Network Kiss.

SSID

You'll sometimes see a dash number after the callsign, this is called an SSID and they have different meaning depending on whether you're on APRS or Winlink. See the [SSID How-To](#) for more info.