

OpenStreetMap

OpenStreetMap (OSM) is like Wikipedia for maps. It's built by the community using aerial imagery, GPS devices, or existing public domain maps. The maps can be viewed or edited online in a browser, or using various apps.

The main advantages of OSM over Google Maps are that the maps:

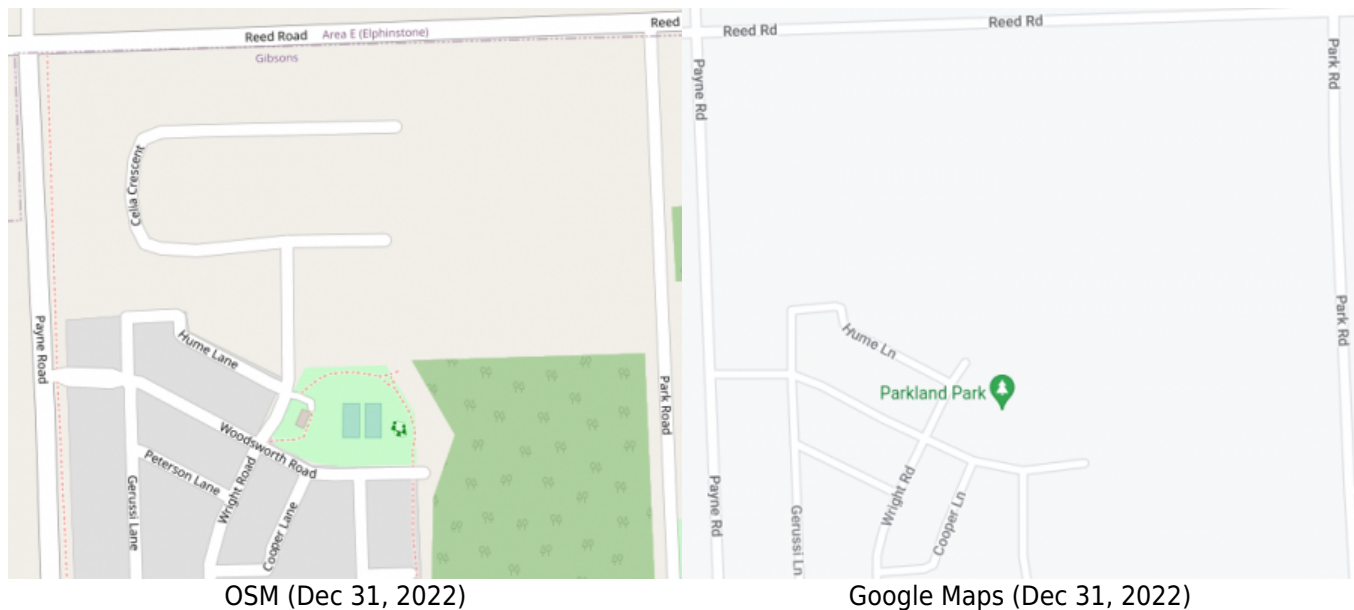
- are more [up-to-date](#),
- have [more trail information](#),
- have lots of [different layers](#) (like topographic information), and
- can be used [offline](#), which is a big one for emergency preparedness.

Some Links

- To view the Maps: [osm.org](https://openstreetmap.org) or openstreetmap.org
- App for Android, iPhone, Linux: <https://organicmaps.app>
- More Info: <https://wiki.openstreetmap.org>

Up-To-Date

Since OSM is updated by users, the maps tend to be more up-to-date than Google Maps. For example, here's a new street that I added in Gibsons in October 2022. Google Maps is still not showing it almost three months later:

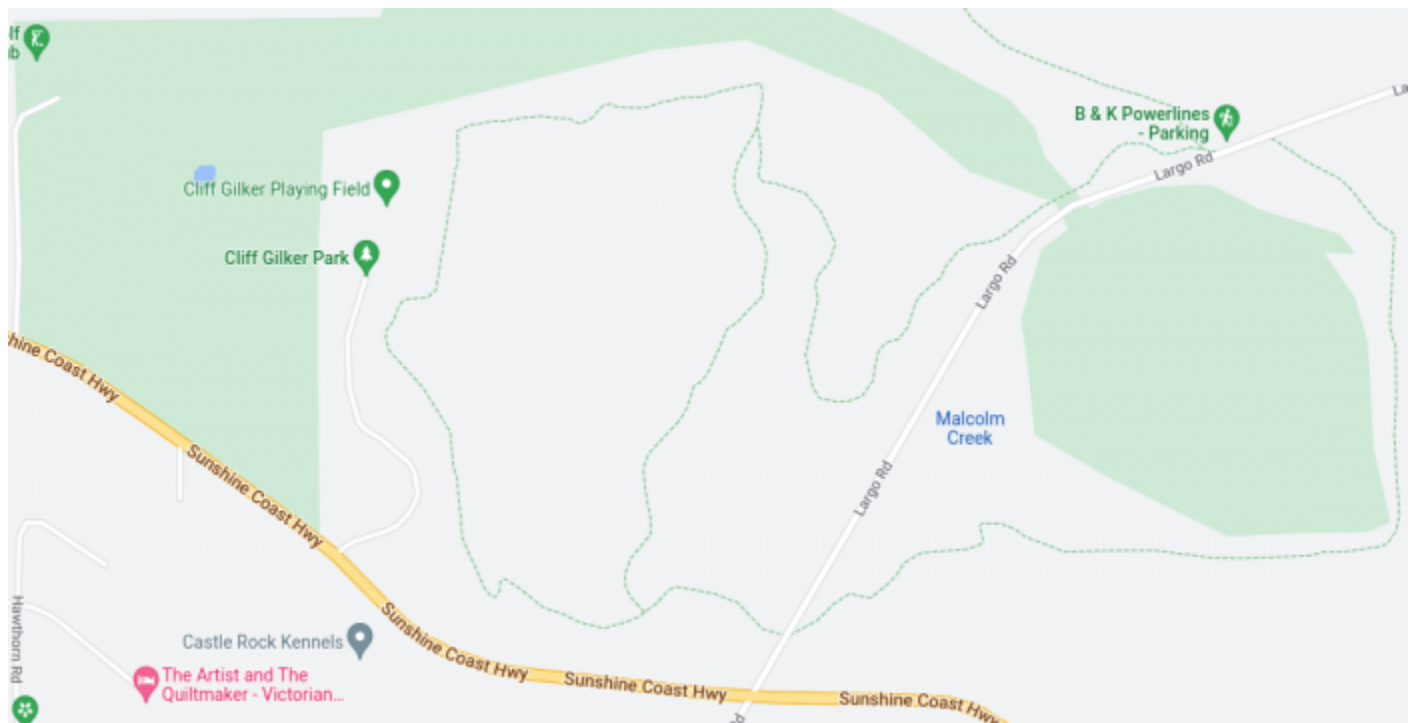


More Trails

There are also a lot more trails on OSM than on Google Maps since anyone with a cellphone can record their GPS tracks while they hike, add the trails to OSM later. For example, here's the golf course and Cliff Gilker park in Roberts Creek:



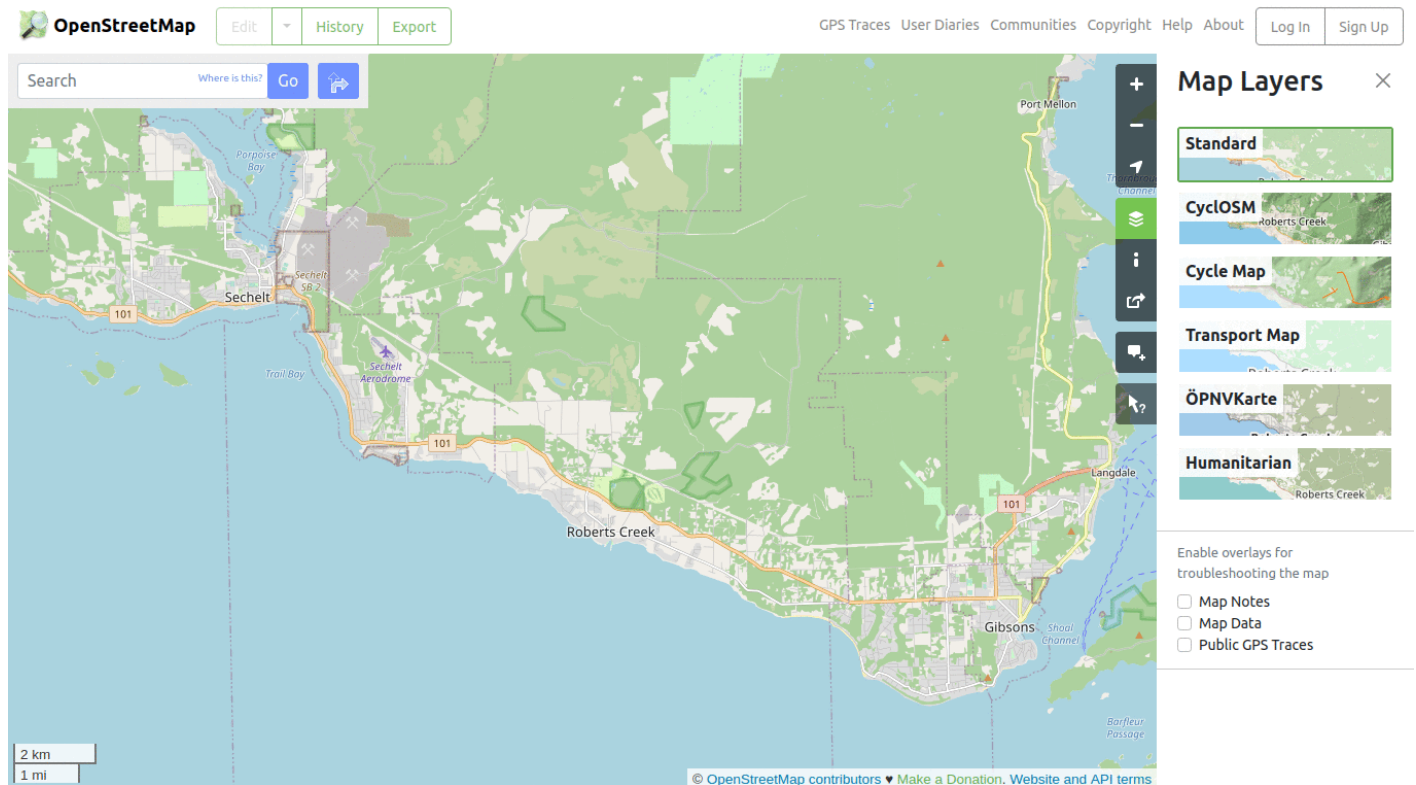
OSM (Dec 31, 2022)



Google Maps (Dec 31, 2022)

Different Layers

OSM also has different layers that highlight different information. The **CycleOSM** and **Cycle Map** layers are very useful since they add topographical information. **Public GPS Traces** uploaded by the community can also be added to any layer.



Offline

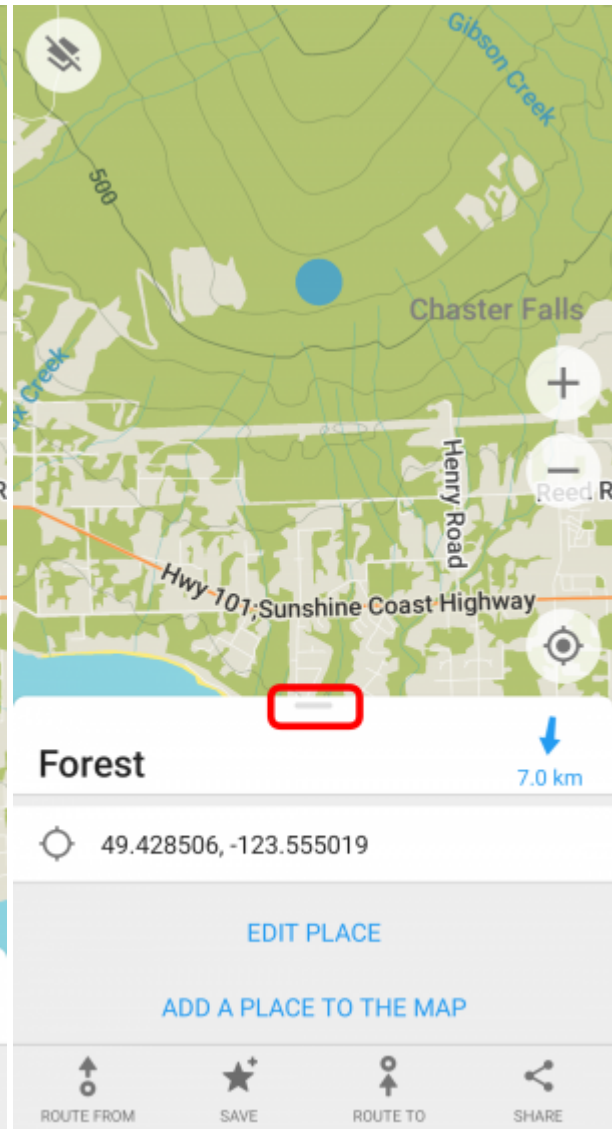
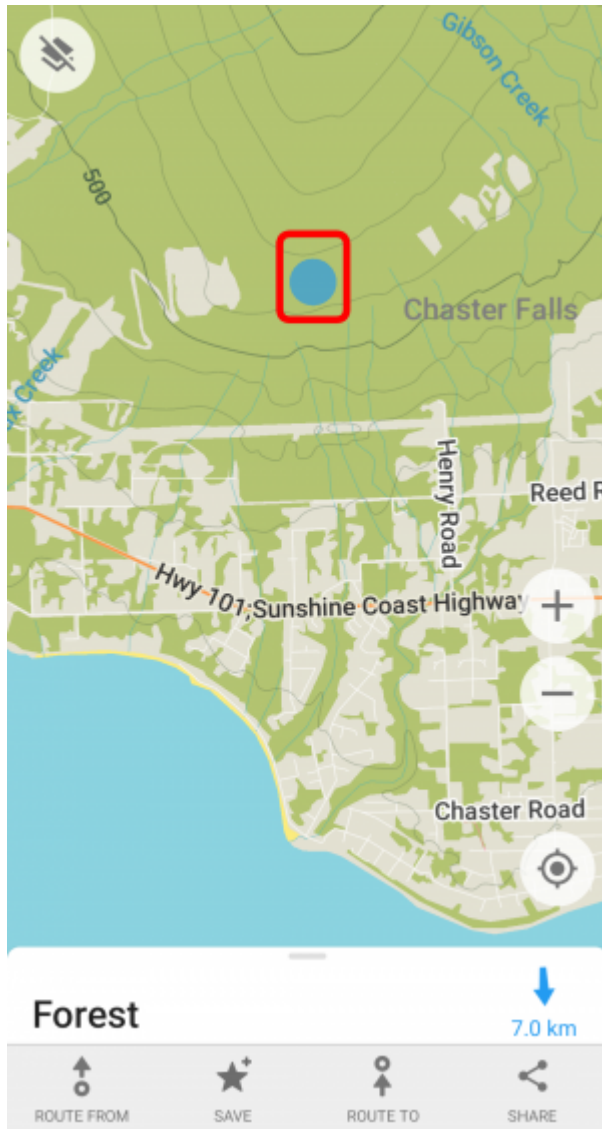
The biggest advantage (from an emergency preparedness perspective) is that OSM can be used offline using various apps by downloading the maps locally. An app that I particularly like is [Organic Maps](#). It's available on [iOS](#), [Android](#), and Linux (as [Flatpak](#) or [other packages](#)). A monthly update of the maps can be triggered manually from the app.

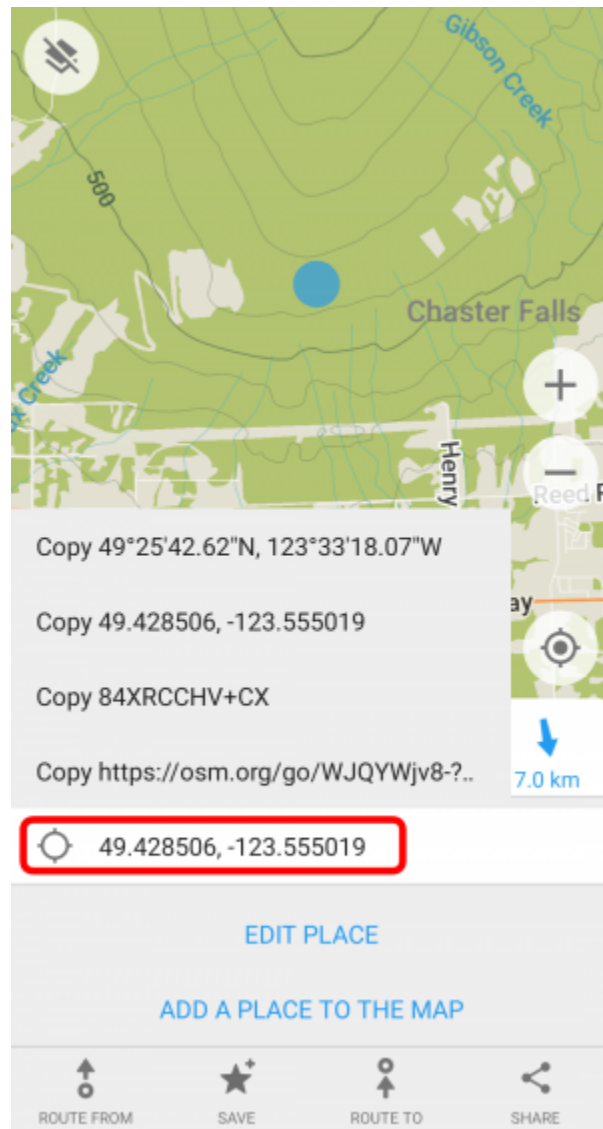
Android

Since the GPS receiver on Android phones has nothing to do with cellular or wifi reception, Organic Map can be used anywhere in the back country there's a clear view of the sky (to get a good GPS lock).

Here's how to get the GPS coordinates of a point on the map (for example):

1. Touch and hold the map at the desired location to get a blue dot
2. Drag the lower menu upwards to reveal the coordinates
3. Touch and hold the coordinates to see options of which information to copy to the clipboard.

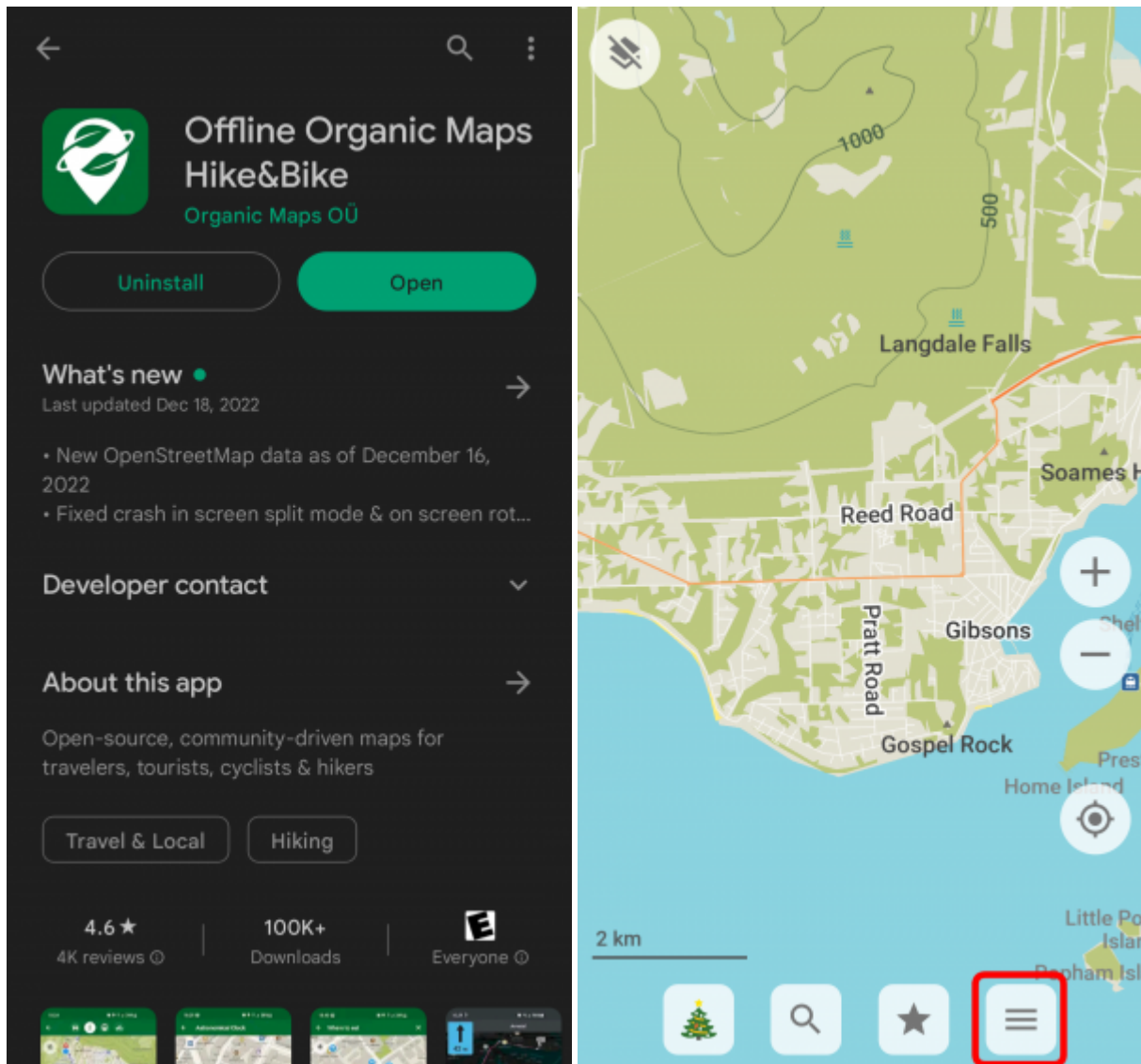


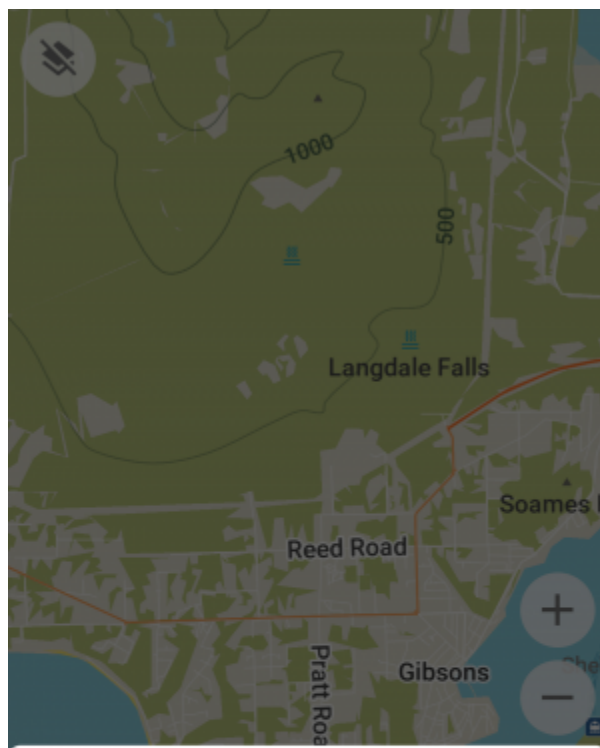


Conversely, use the search icon to input coordinates to show the point on the map.

Updating the maps on Android is a two-step process:

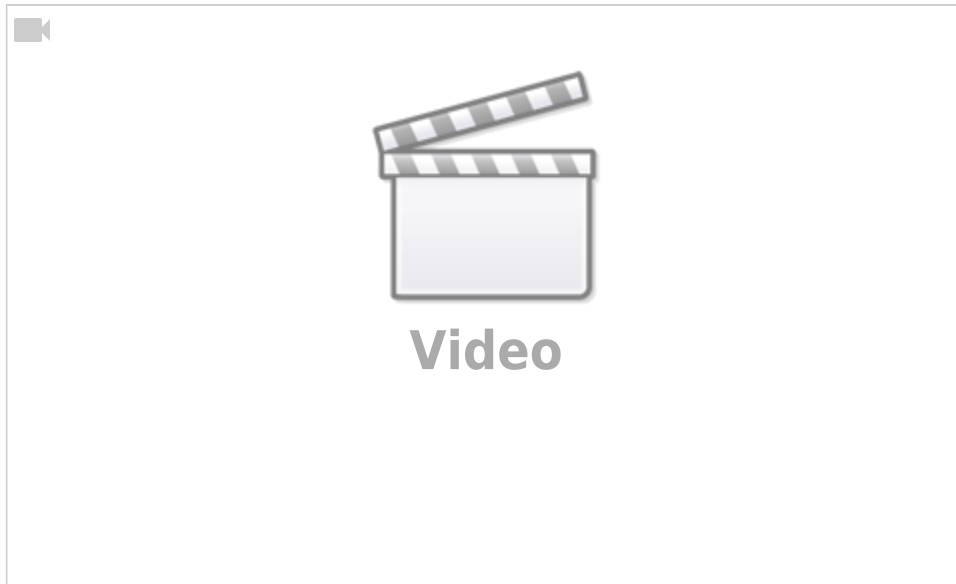
1. The app itself must be updated monthly (from the [Play Store](#) or [F-Droid](#)).
2. Then, the maps can be updated from the app.





Linux

Installing Organic Maps on a computer could help EOCs manage resources over the radio when the internet is down. Maps can be searched or even printed for field work. Different areas can be downloaded locally with a few simple clicks. All of Canada takes a bit over 3 GB of space.



Rightnow, the option to delete individual areas doesn't seem to be working very well but the individual files are located here (at least on the Flatpak install) and can be deleted manually:

```
~/.var/app/app.organicmaps.desktop/data/OMaps
```