

SignalLink USB

This page shows how to configure a *SignalLink USB* unit using an *Icom ID-5100*, *KT-8900*, and *IC-207* radios. The instructions can easily be adapted for other radios. You will still need to use the instructions that come with the SignalLink to complement.

Once the SignalLink is working, it can be used to run Winlink, APRS, Packet, SSTV, ...

Initial Hardware Configuration



Important

Read and follow the [instructions](#) that come with the SignalLink unit carefully. This page skips over some important details.

If your radio requires the “RG45” cable (like the IC ID-5100), you should purchase a [SignalLink USB](#) that comes with a different cable (such as the “6PM”) since regular Ethernet patch cords are easy to come by.

- Remove the four Allen screws at the **front** of the SignalLink and slide the case off.
- Install the jumpers using this [wiring page](#). Here we scroll down to “RJ-45 Mic Connector” and confirm that “ID-5100A/E” is in the “radio model” column. For quick reference:

Left Side	Right Side		
	IC ID-5100	KT-8900	IC-207 ¹⁾
G	none	none	none
G	→ 7	→ 6	none
G	→ 5	→ 4	→ 2
- - -	none	none	none
PWR ²⁾	none	none	none
PTT	→ 4	→ 5	→ 3
MIC	→ 6	→ 3	→ 1
SPKR ³⁾	none	none	→ 5 or 4 ⁴⁾



Connect the SignalLink to the computer in this order:

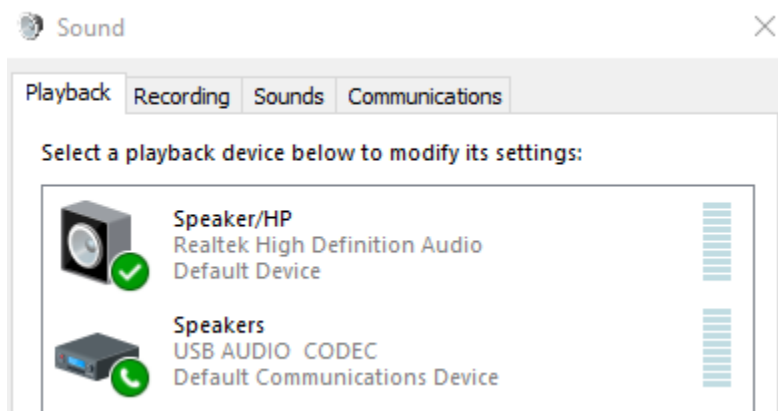
- Make sure the SignalLink unit is off.
- Tune the radio to a simplex frequency not in use.
- Connect the radio's speaker jack to the SignalLink's SPKR jack using the audio cable included.
- Connect the radio's mic jack to the SignalLink's RADIO jack using a short Ethernet patch cord (RG45).
- Connect USB cable between SignalLink to computer.
- Set the SignalLink USB's TX level control to minimum (fully counter-clockwise), the RX level control to 50%, and the DLY control to minimum.
- Power on SignalLink unit.

8. Wait for Windows to download and install any new drivers it may need.

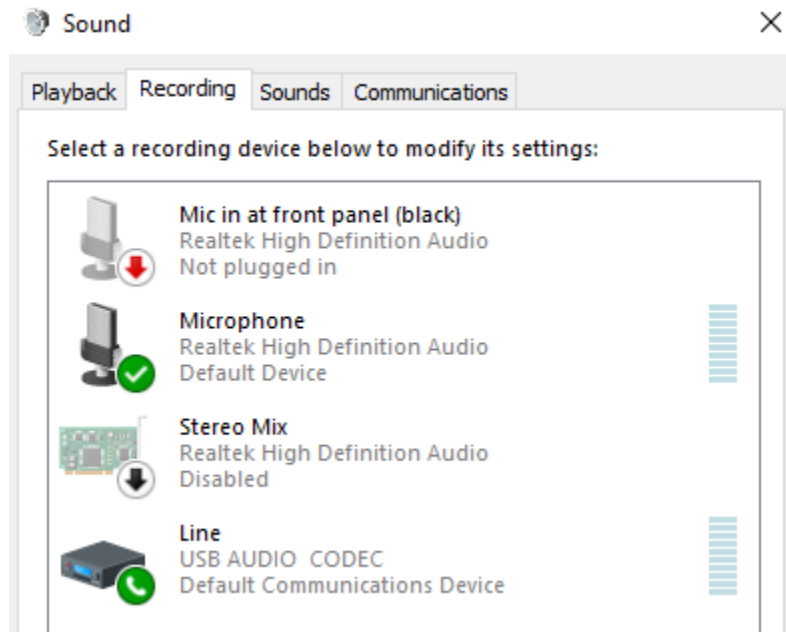
Initial Software Configuration

Windows Sound

- Right click on the speaker icon (near the clock)
- Additional steps for Windows 10: Select Open Sound Settings → Sound Control Panel
- Select Playback Devices
 - Select Speaker and click on Set Default at the bottom of the window. This will ensure that any Windows generated sounds are played through the speakers instead of being transmitted on the air.
 - Select USB AUDIO CODEC⁵⁾ and click on Default Communication Device.
 - At this point, you might as well double click on the device and rename it “Signalink”. This will be useful if you ever connect multiple sound cards to the computer.
 - Click on Properties
 - Under Levels: Set the levels to 0dB or 100%
 - Under Enhancements: check Disable all enhancements
 - Under Spatial sound: Turn Spatial sound format OFF

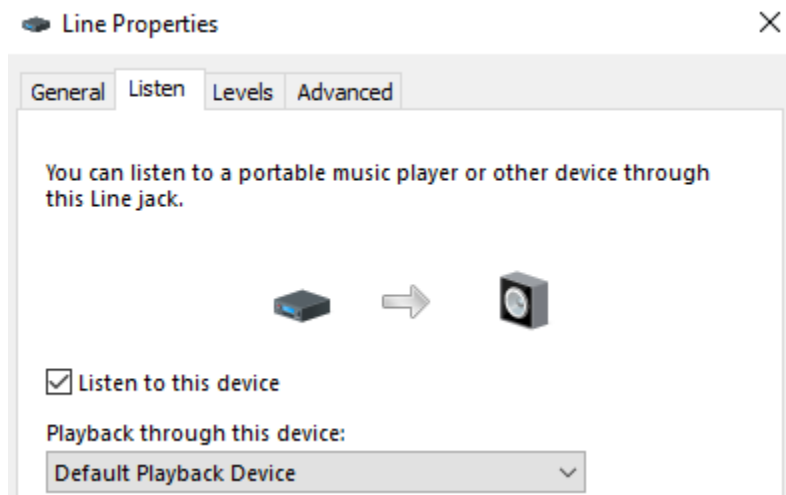


- Select the Recording tab
 - Select Microphone and click on Set Default at the bottom of the window.
 - Select USB AUDIO CODEC and click on Default Communication Device
 - Rename it “Signalink” also.



There should be a green check mark beside the speaker/Microphone (general computer sounds), and a green telephone beside the USB AUDIO CODEC (Default for communication sounds)

- Select the Sounds tab
 - Select the No Sounds scheme and do not Play Windows Startup sound. This will ensure that Windows sounds don't get transmitted over the air.
- Optionally, double click on the USB AUDIO CODEC and select the Listen tab and check the Listen to this device box to hear the radio through the computer's Default Playback Device.



UZ7HO SoundModem

- Download [soundmodem1xx.zip](#)
- Unzip the content to a convenient folder and create a link to the exe somewhere on your desktop for easy access.
- [Configure](#) the Settings → Devices and Modems as follow:

Settings

Sound Card

Output device Signalink (USB AUDIO CODEC)

Input device Signalink (USB AUDIO CODEC)

☐ Dual channel
TX SampleRate 11025

☐ TX rotation
TX corr. PPM -27

☒ Single channel output
RX SampleRate 11025

☐ Color waterfall
RX corr. PPM -27

☒ Stop waterfall on minimize
Priority Highest

☐ Minimized window on startup

Server setup

AGWPE Server Port 8000 ☒ Enabled

KISS Server Port 8100 ☒ Enabled

PTT Port

Select PTT port NONE
☐ Dual PTT

☐ Swap COM pins for PTT

Advanced PTT settings

OK

Cancel

Modem settings

Modem filters ch: A

BPF Width 1400 Show

TXBPF Width 1600 Show

LPF Width 650 Show

BPF Taps 256

LPF Taps 128

☒ Default settings

PreEmphasis filter None ☒ All

☒ KISS Optimization

☒ non-AX25 filter

Modem type ch: A

Mode AFSK AX.25 1200bd

TXDelay 500 msec

TXTail 50 msec

Add. RX 0 pairs

Add. RX shift 30 Hz

Bits Recovery NONE

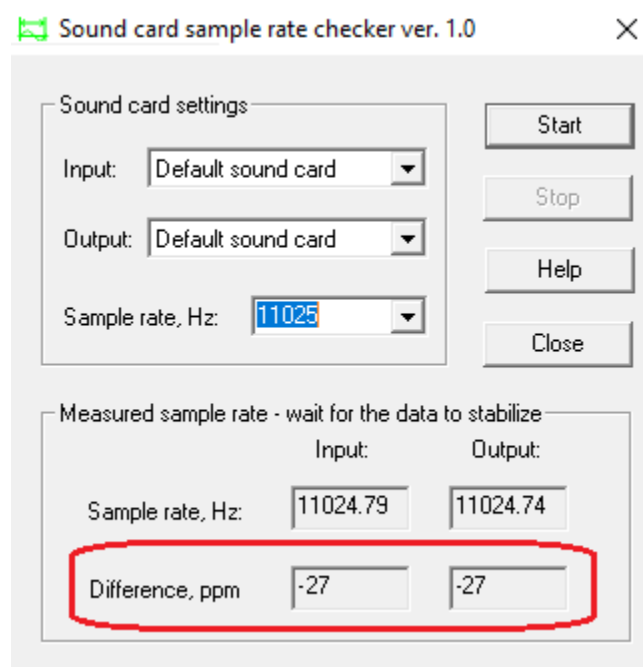
For the Device Settings

- The values of -27 for the TX corr. PPM and RX corr. PPM are device specific and were measured using the CheckSR program (see below).
- AGWPE Server Port 8000 is enabled for EasyTerm by UZ7HO

For the Modem settings:

- Kiss Optimization is needed for Winlink
- Other stations were having issues decoding my transmissions so I increased the TXDelay from 250 msec to 500 msec

CheckSR



[CheckSR](#) is a small, standalone, application that consist of a single exe file. When you double click on it, once it's saved to your desktop, it provides the capability of analyzing your sound card offsets and gives you the corrections in parts per million (ppm)

This offset (in my case -27 PPM and -27 PPM) can be entered in the SoundModem settings (see above).

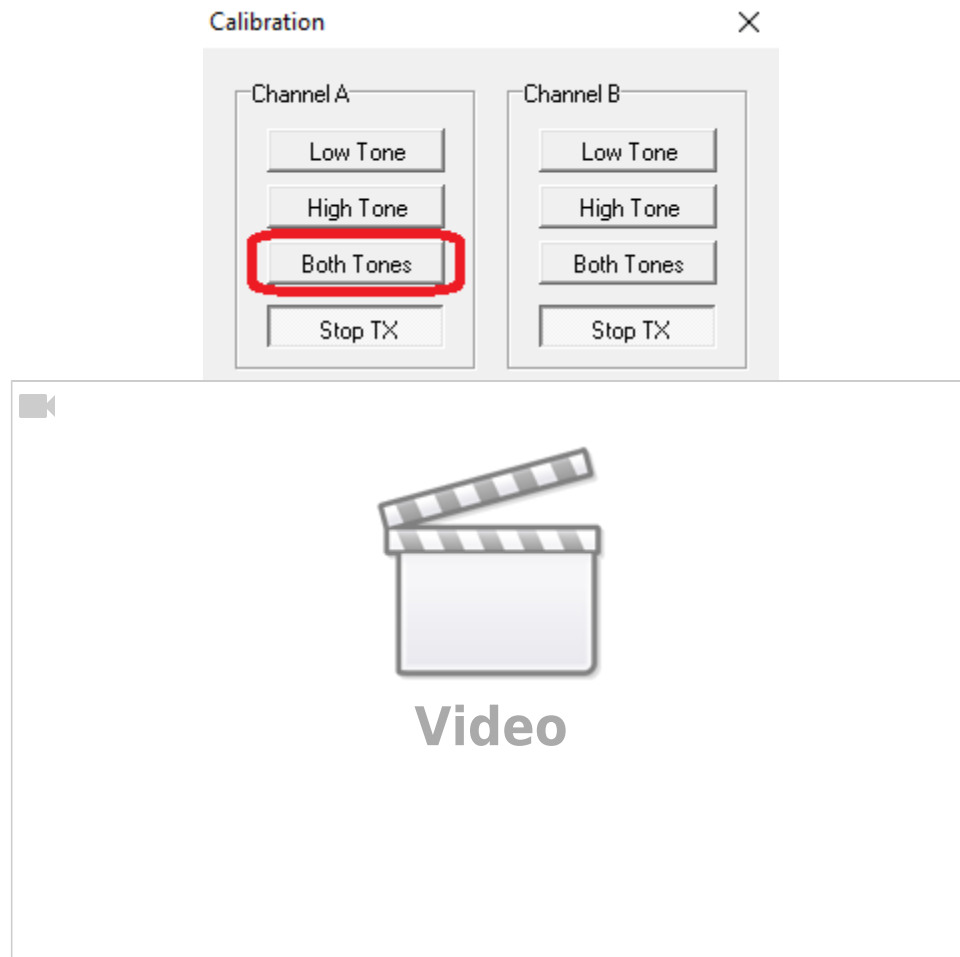
Signalink Sound Levels

- Make sure that all three nob's on the Signalink are turned to "0"⁶⁾



- Output volume calibration. The idea here is that you want to transmit the loudest volume possible without over driving and distorting the signal. In general, there's three different volumes to adjust: the computer's output, the radio's microphone gain, and the Signalink Tx Volume.
 - Start by setting the Windows output volume to 50% (Open Sound settings → Sound Control Panel → Recording → double click on Signalink → Levels
 - and the Radio's microphone gain to 2
 - To adjust the Signalink Tx Volume:

- Select a simplex frequency not in use, and identify using your microphone to let other potential operators know of your intention to conduct a brief test.
- Using a second radio, monitor the frequency.
- In the “Calibration” menu, click on “Both Tones” and slowly move the TX dial back and forth until you find the spot where the two tones are the clearest with the least inter modulation.



Without proper instruments this is a bit of a subjective test, but it's better than nothing.

Winlink

- Download [WinlinkExpress](#), install, and register your callsign (not included in this guide).
- [Send and receive](#) messages.

Other Resources

- [CheckSR](#)
- [Setting Up Signalink USB \(Youtube\)](#)

1)

Using the 6-pin mini DIN data port instead of the mic jack.

2)

The Signalink power is drawn from computer's USB port, not from the radio's mic jack

3)

If the mic jack doesn't have audio out, the audio is taken from the speaker jack at the back of the radio using a regular 1/8" audio cable instead

4)

5 is for 1200 Baud, 4 is for 9600 Baud

5)

Note that the icons themselves might be different. Look for the words USB AUDIO CODEC

6)

I added the numbers on the picture for easy reference only.